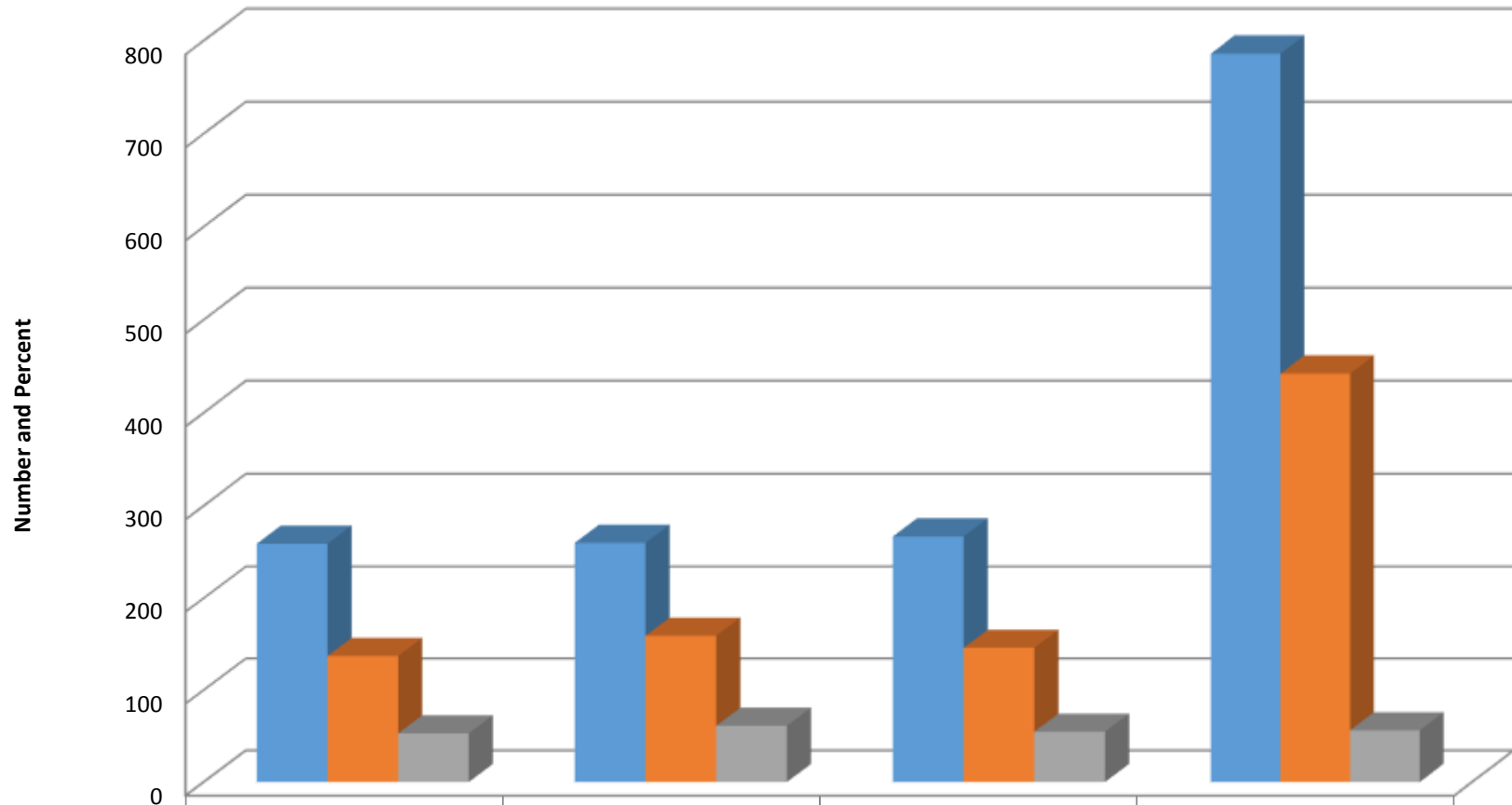
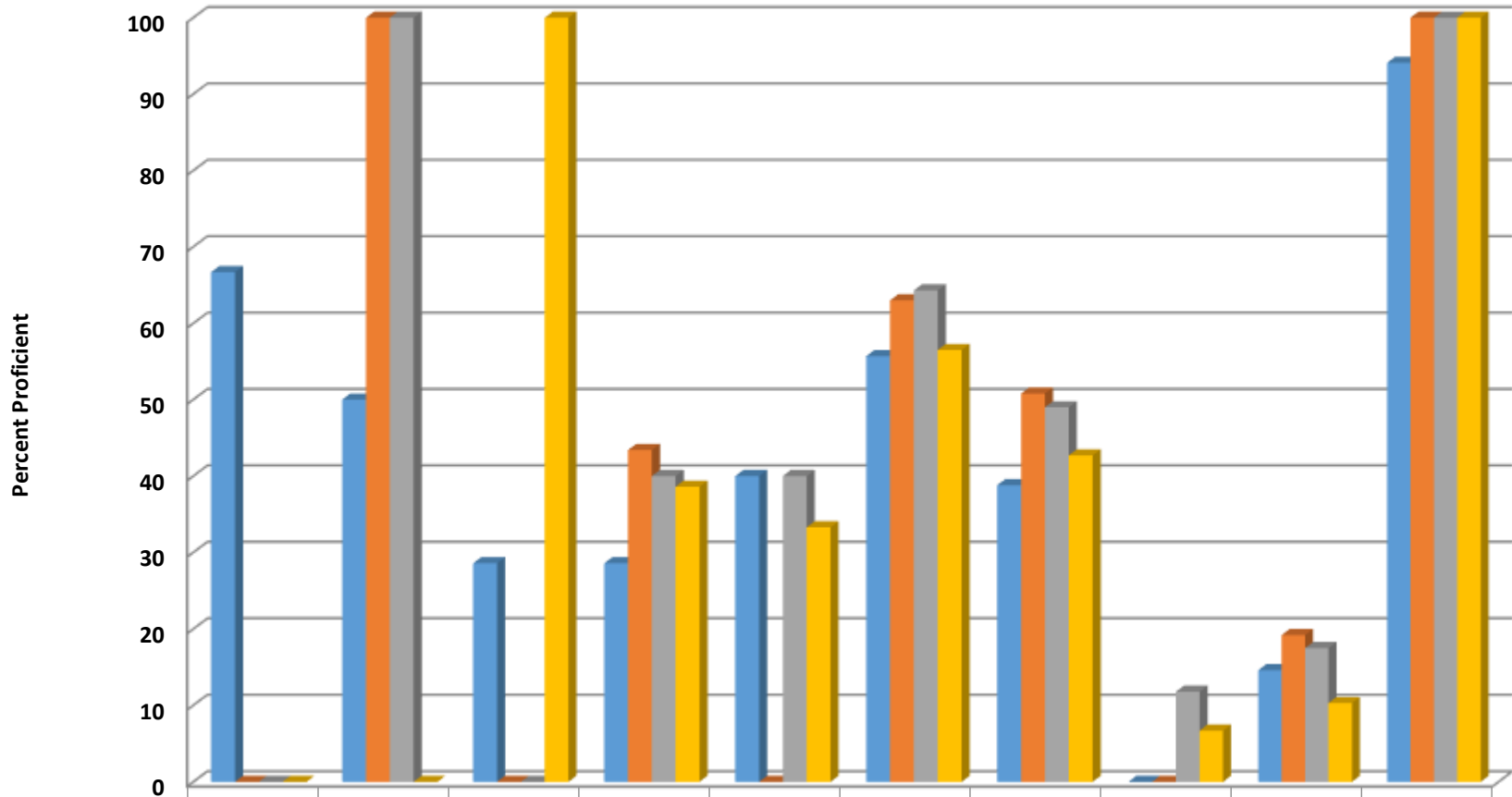


Southwestern Randolph High 2016-2017 All EOC's GLP



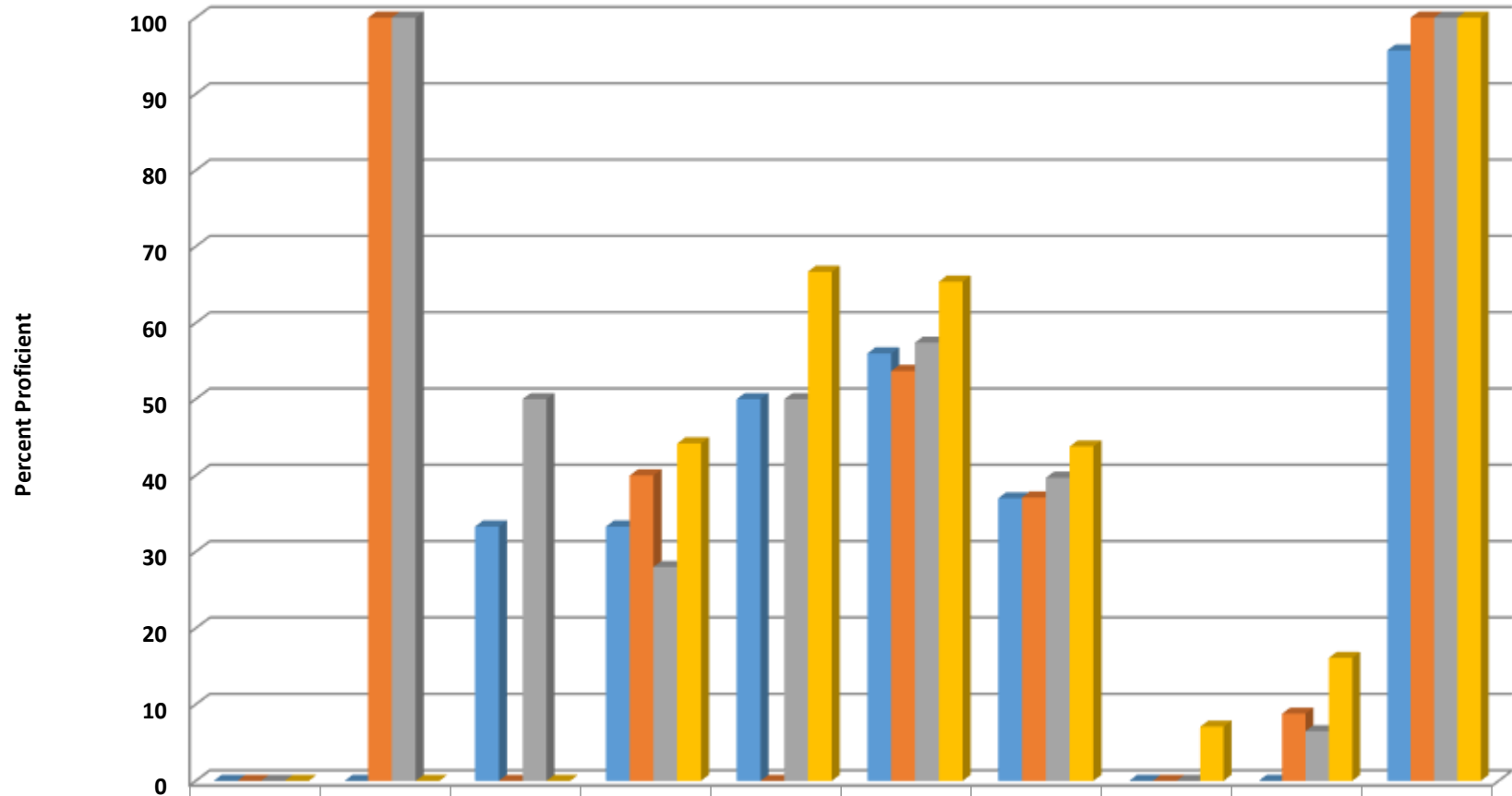
	Bio	E2	M1	EOC
denomiantor	259	260	267	786
numerator	137	159	146	442
percent	52.9	61.2	54.7	56.2

Southwestern Randolph High Biology Percent Proficient by Subgroups



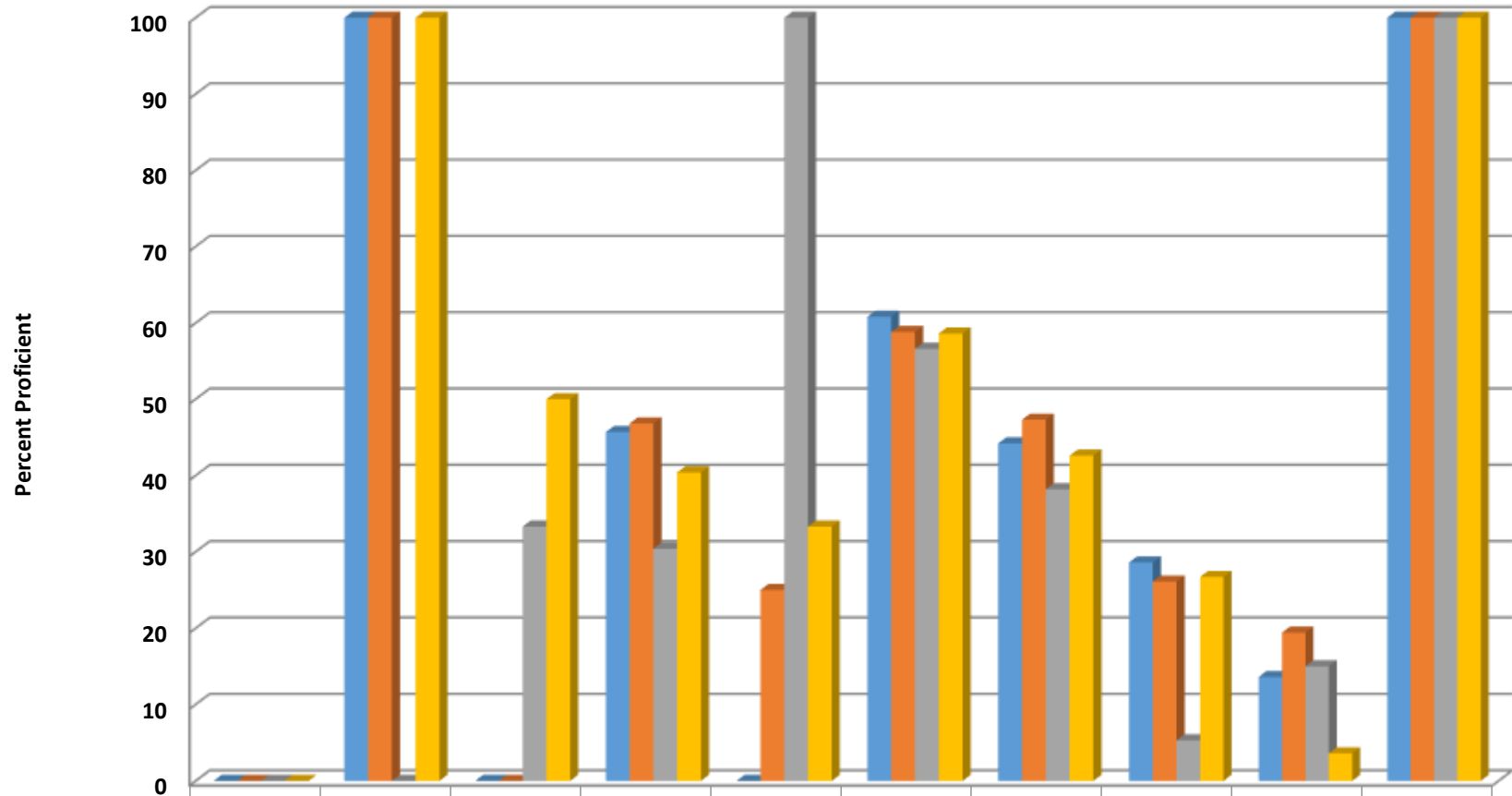
	AMIN	ASIA	BLCK	HISP	MULT	WHITE	EDS	LEP	SWD	AIG
2014 prof pct	66.7	50	28.6	28.6	40	55.7	38.8	0	14.6	94.1
2015 prof pct	0	100	0	43.4	0	63	50.8	0	19.2	100
2016 prof pct	0	100	0	40	40	64.3	49	11.8	17.5	100
2017 prof pct	0	0	100	38.6	33.3	56.5	42.7	6.7	10.3	100

Southwestern Randolph High English II Percent Proficient by Subgroups



	AMIN	ASIA	BLCK	HISP	MULT	WHITE	EDS	LEP	SWD	AIG
■ 2014 prof pct	0	0	33.3	33.3	50	56	37	0	0	95.7
■ 2015 prof pct	0	100	0	40	0	53.7	37.1	0	8.8	100
■ 2016 prof pct	0	100	50	28	50	57.4	39.7	0	6.5	100
■ 2017 prof pct	0	0	0	44.2	66.7	65.4	43.8	7.1	16.1	100

Southwestern Randolph High NC Math I Percent Proficient by Subgroups



	AMIN	ASIA	BLCK	HISP	MULT	WHITE	EDS	LEP	SWD	AIG
■ 2014 prof pct	0	100	0	45.7	0	60.8	44.2	28.6	13.6	100
■ 2015 prof pct	0	100	0	46.8	25	58.8	47.3	26.1	19.4	100
■ 2016 prof pct	0	0	33.3	30.4	100	56.6	38.2	5.3	15	100
■ 2017 prof pct	0	100	50	40.4	33.3	58.6	42.6	26.7	3.6	100

Four Year Graduation Subgroup Data

SWRHS	2016-2017			2015-2016			2014-2015			2013-2014		
Subgroup	Denominator	Numerator	Percent	Denominator	Numerator	Percent	Denominator	Numerator	Percent	Denominator	Numerator	Percent
All Students	258	225	87.2	257	219	85.2	277	248	89.5	279	248	88.9
Male	135	111	82.2	140	115	82.1	146	124	84.9	146	123	84.2
Female	123	114	92.7	117	104	88.9	131	124	94.7	133	125	94
American Indian	*	*	*	*	*	*	*	*	*	*	*	*
Asian	*	*	*	*	*	*	*	*	*	*	*	*
Black	*	*	*	5	4	80	*	*	*	5	4	80
Hispanic	48	45	93.8	41	32	78	39	34	87.2	40	37	92.5
Two or More Races	*	*	*	5	-	>95	*	*	*	*	*	*
White	203	174	85.7	204	177	86.8	228	206	90.4	227	201	88.5
Economically Disadvantaged	116	93	80.2	111	89	80.2	135	112	83	124	103	83.1
Limited English Proficient	7	5	71.4	10	7	70	8	3	37.5	5	-	>95
Students With Disabilities	25	16	64	18	15	83.3	21	12	57.1	21	13	61.9
Academically Gifted	19	17	89.5	22	-	>95	19	-	>95	28	-	>95