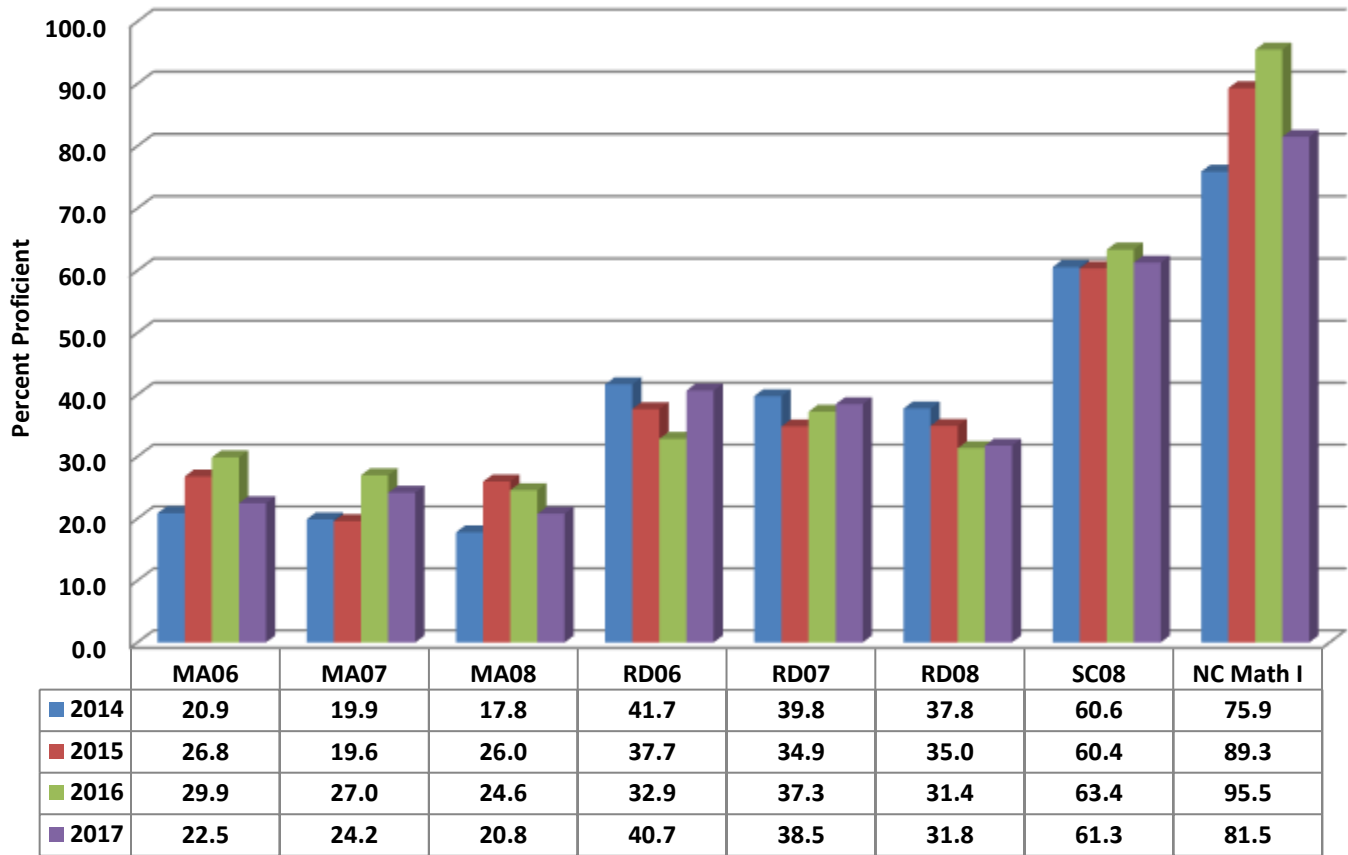


Southeastern Randolph Middle Four Year Comparison Using GLP



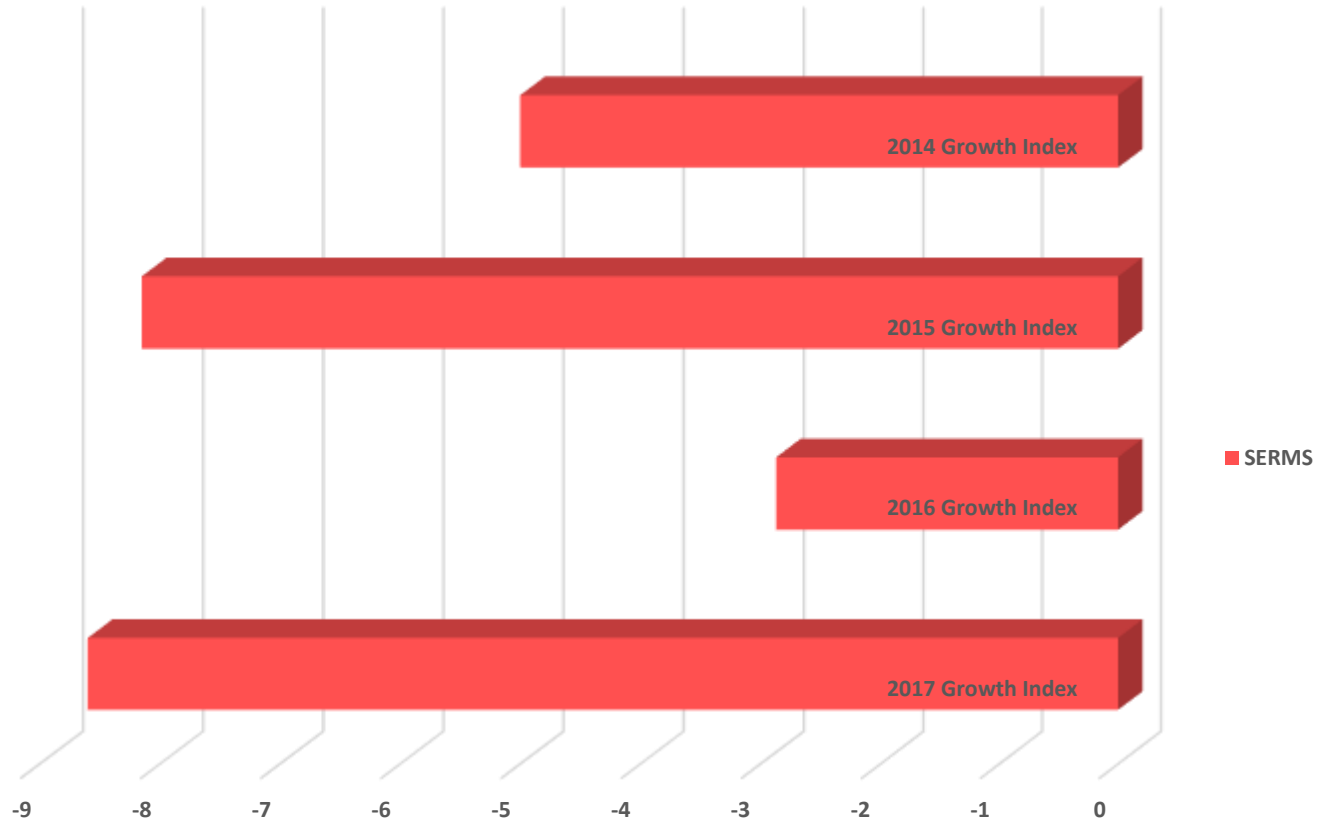
READY Accountability Model

	CCR Denominator	CCR Percent	GLP Denominator	GLP Percent
2014	1751	25.2	1751	35.5
2015	1678	27.8	1678	35.0
2016	1503	28.0	1503	36.3
2017	1526	27.0	1526	36.2

State and Former Federal AMO Targets

	EVASS Status	Total Targets	Targets Met	Target Percent
2014	Did Not Met Expected Growth	44	27	61.4
2015	Did Not Met Expected Growth	42	25	59.5
2016	Did Not Met Expected Growth	21	21	100.0
2017	Did Not Met Expected Growth	24	24	100.0

Southeastern Randolph Middle Growth Index



	2017 Growth Index	2016 Growth Index	2015 Growth Index	2014 Growth Index
SERMS	-8.6	-2.87	-8.15	-5

Growth Index

	School Accountability Type	Index	Level
2014	Math, Reading, Science, and Math I	-5.0	Did Not Met Expected Growth
2015	Math, Reading, Science, and Math I	-8.15	Did Not Met Expected Growth
2016	Math, Reading, Science, and Math I	-2.87	Did Not Met Expected Growth
2017	Math, Reading, Science, and Math I	-8.6	Did Not Met Expected Growth