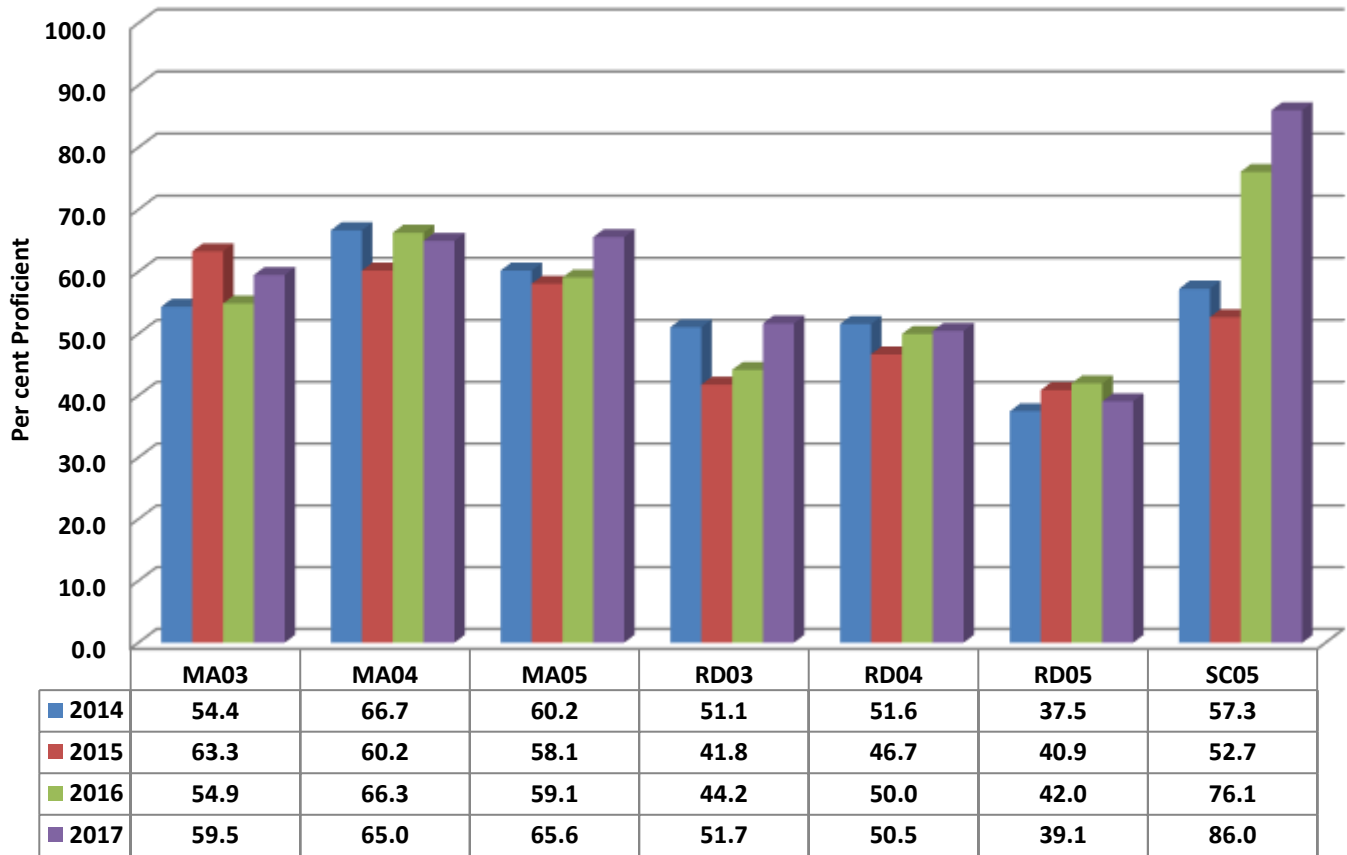


## Southmont Elementary Four Year Comparison Using GLP



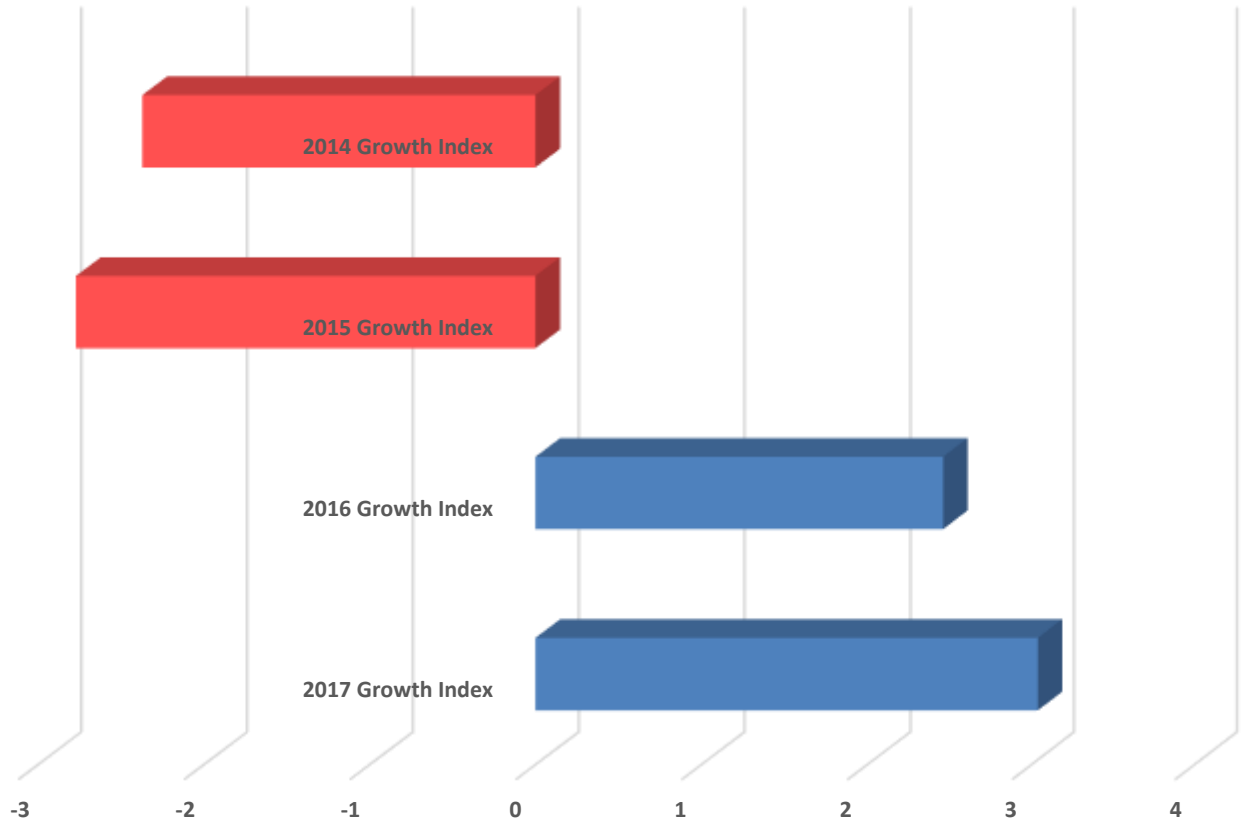
### READY Accountability Model

	CCR Denominator	CCR Percent	GLP Denominator	GLP Percent
2014	676	43.9	676	54.0
2015	660	41.8	660	52.0
2016	686	47.1	686	55.7
2017	716	47.1	716	59.4

### State and Former Federal AMO Targets

	EVASS Status	Total Targets	Targets Met	Target Percent
2014	Did Not Met Expected Growth	29	23	79.3
2015	Did Not Met Expected Growth	27	18	66.7
2016	Exceeded Expected Growth	16	16	100.0
2017	Exceeded Expected Growth	18	18	100.0

### Southmont Elementary Growth Index



	2017 Growth Index	2016 Growth Index	2015 Growth Index	2014 Growth Index
Southmont	3.04	2.46	-2.77	-2.37

### Growth Index

	School Accountability Type	Index	Level
<b>2014</b>	Math, Reading, and Science	-2.37	Did Not Met Expected Growth
<b>2015</b>	Math, Reading, and Science	-2.77	Did Not Met Expected Growth
<b>2016</b>	Math, Reading, and Science	2.46	Exceeded Expected Growth
<b>2017</b>	Math, Reading, and Science	3.04	Exceeded Expected Growth