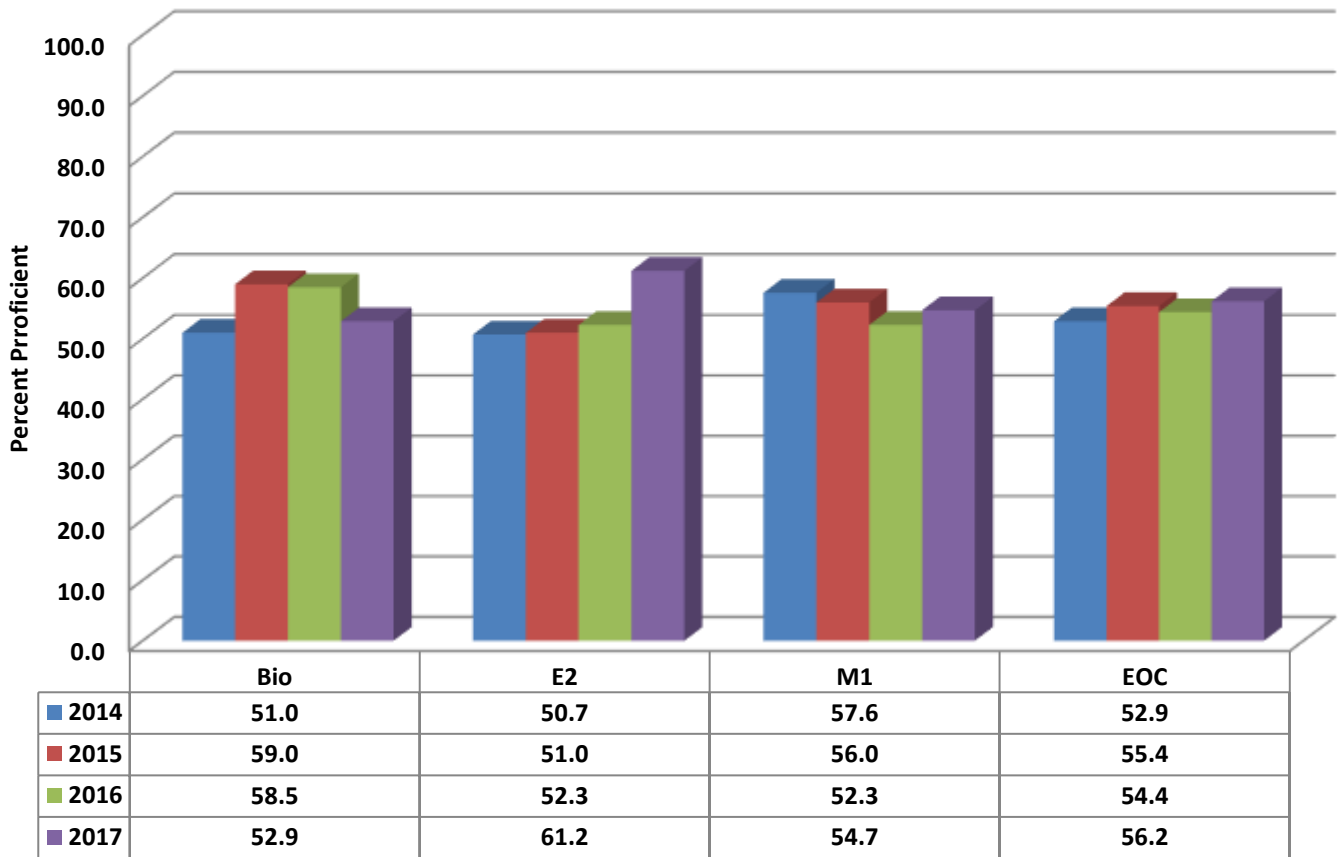


Southwestern Randolph High Four Year Comparison Using GLP



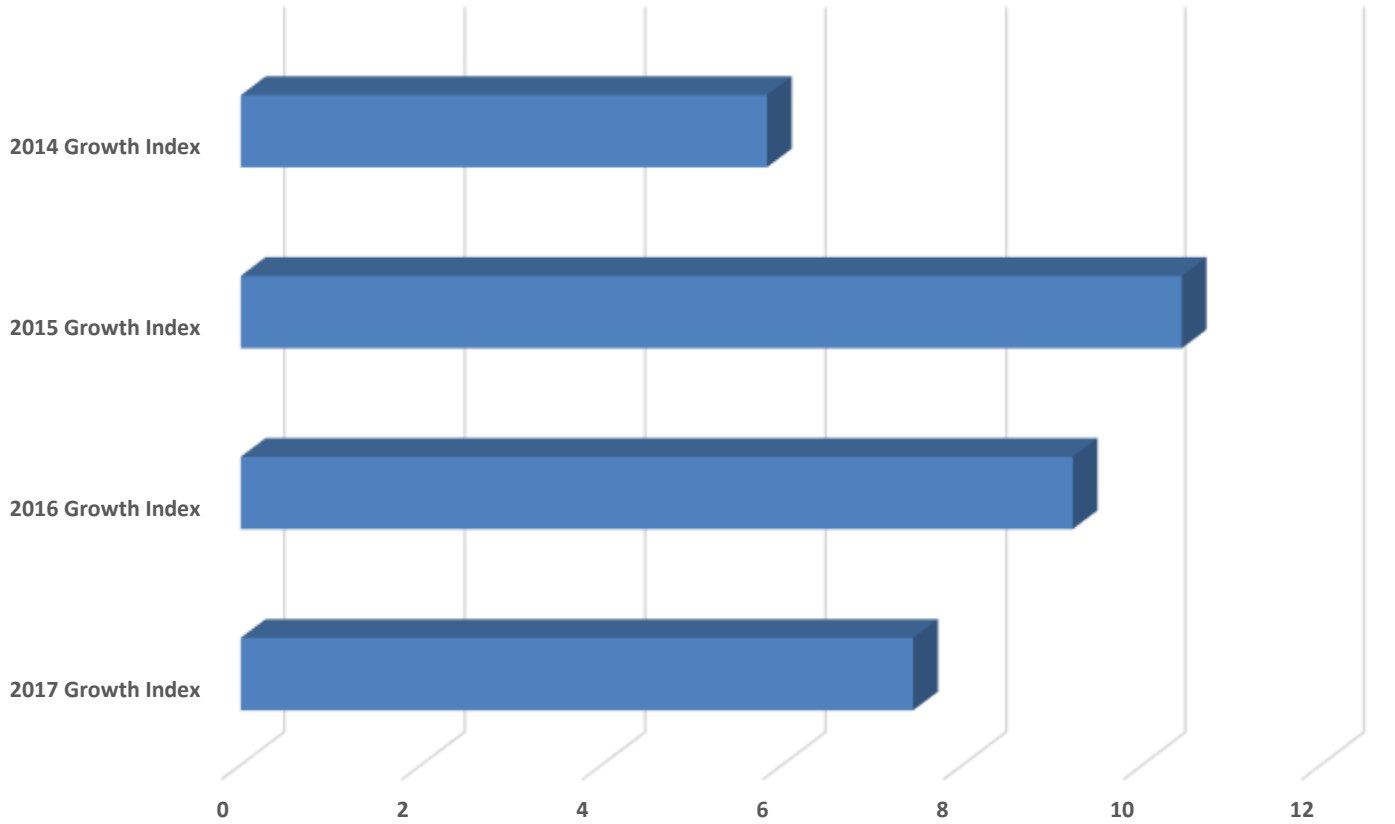
READY Accountability Model

	CCR Denominator	CCR Percent	GLP Denominator	GLP Percent
2014	817	43.7	817	52.9
2015	830	44.7	830	55.3
2016	856	44.5	856	54.4
2017	786	43.0	786	56.2

State and Former Federal AMO Targets

	EVASS Status	Total Targets	Targets Met	Target Percent
2014	Exceeded Expected Growth	54	40	74.1
2015	Exceeded Expected Growth	57	39	68.4
2016	Exceeded Expected Growth	28	28	100.0
2017	Exceeded Expected Growth	27	27	100.0

Southwestern Randolph High Growth Index



	2017 Growth Index	2016 Growth Index	2015 Growth Index	2014 Growth Index
SWRHS	7.45	9.22	10.44	5.83

Growth Index

	School Accountability Type	Index	Level
2014	Math I, Biology, English II	5.83	Exceeded Expected Growth
2015	Math I, Biology, English II	10.44	Exceeded Expected Growth
2016	Math I, Biology, English II	9.22	Exceeded Expected Growth
2017	Math I, Biology, English II	7.45	Exceeded Expected Growth