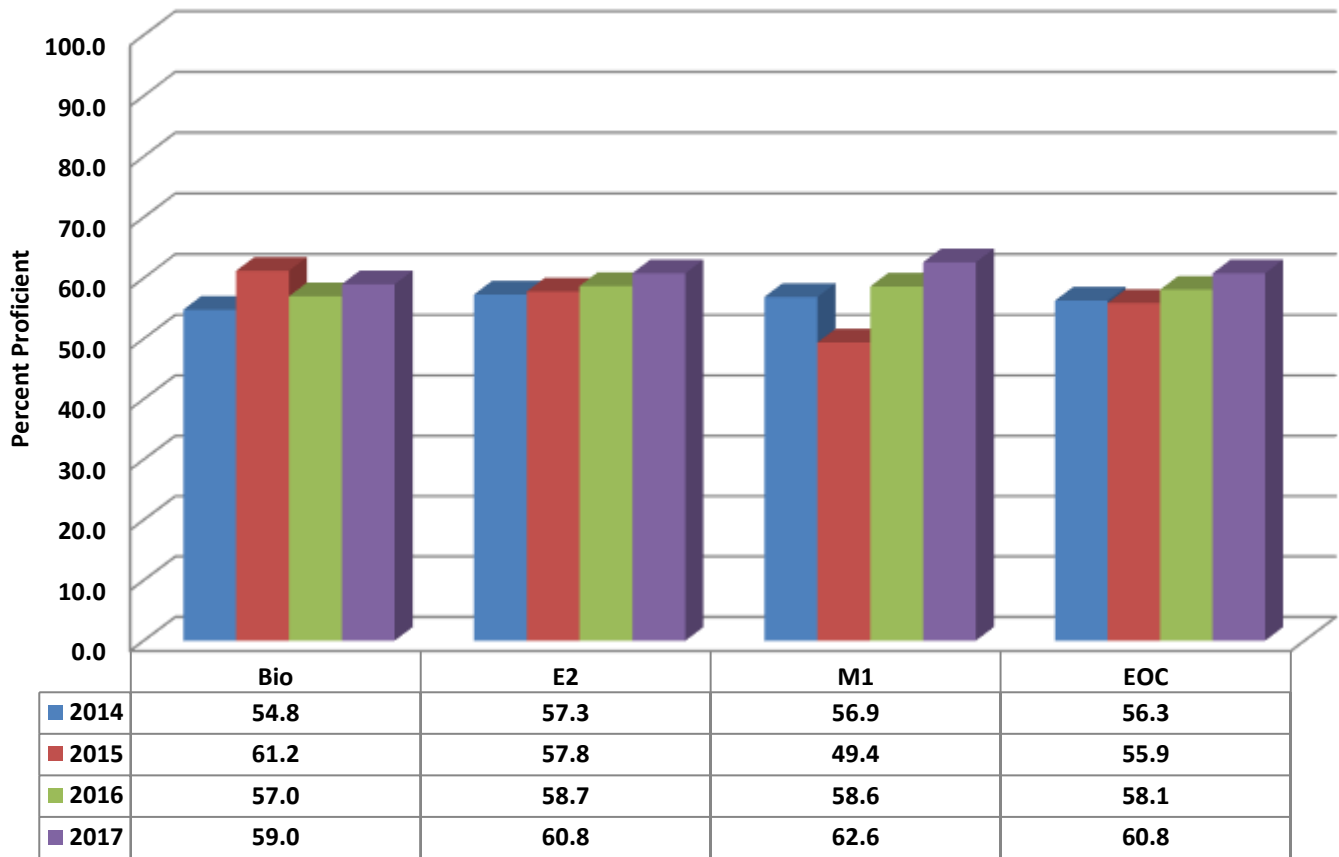


Wheatmore High School Four Year Comparison Using GLP



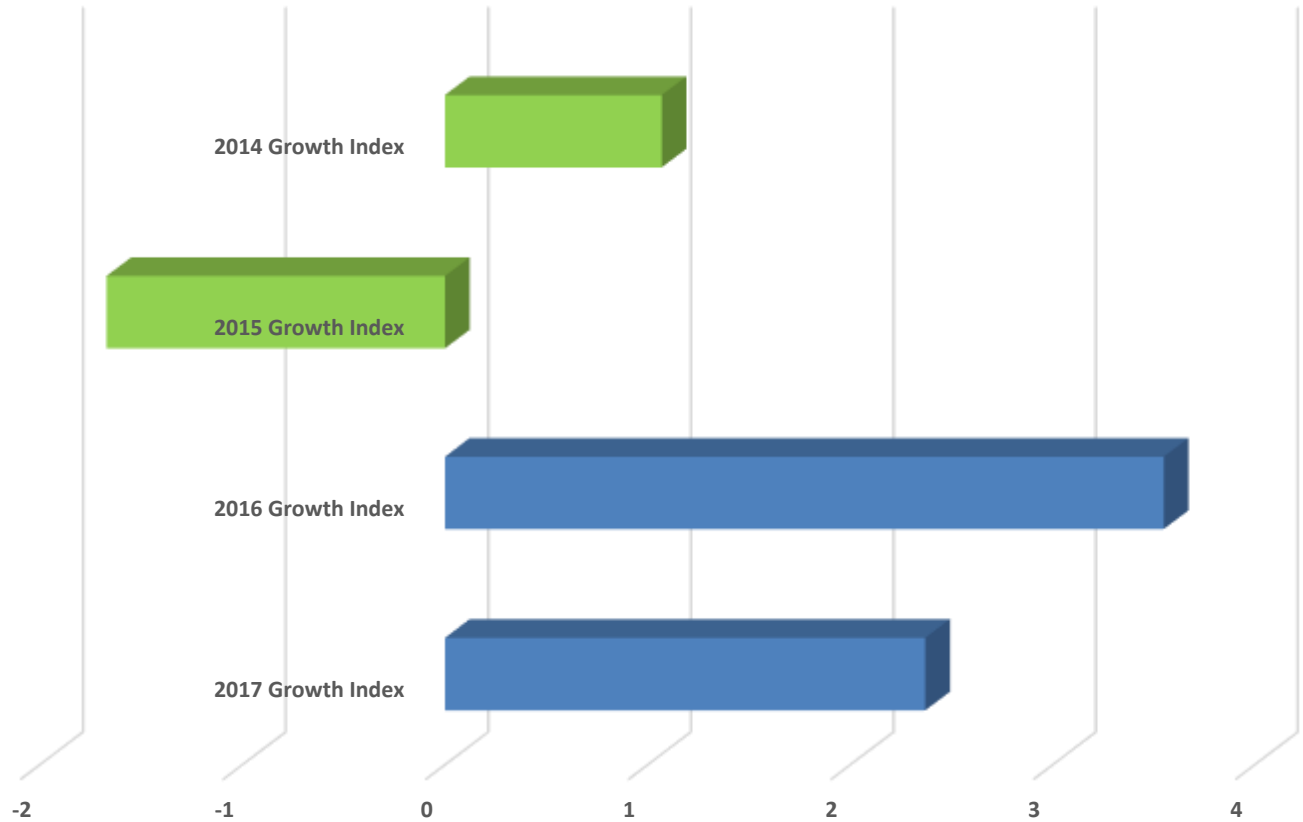
READY Accountability Model

	CCR Denominator	CCR Percent	GLP Denominator	GLP Percent
2014	643	42.6	643	56.3
2015	644	43.8	644	55.9
2016	666	49.2	666	58.1
2017	653	49.2	653	60.8

State and Former Federal AMO Targets

	EVASS Status	Total Targets	Targets Met	Target Percent
2014	Met Expected Growth	39	29	74.4
2015	Met Expected Growth	45	35	77.8
2016	Exceeded Expected Growth	23	23	100.0
2017	Exceeded Expected Growth	21	21	100.0

Wheatmore High Growth Index



	2017 Growth Index	2016 Growth Index	2015 Growth Index	2014 Growth Index
WHS	2.37	3.55	-1.67	1.07

Growth Index

	School Accountability Type	Index	Level
2014	Math I, Biology, and English II	1.07	Met Expected Growth
2015	Math I, Biology, and English II	-1.67	Met Expected Growth
2016	Math I, Biology, and English II	3.55	Exceeded Expected Growth
2017	Math I, Biology, and English II	2.37	Exceeded Expected Growth