

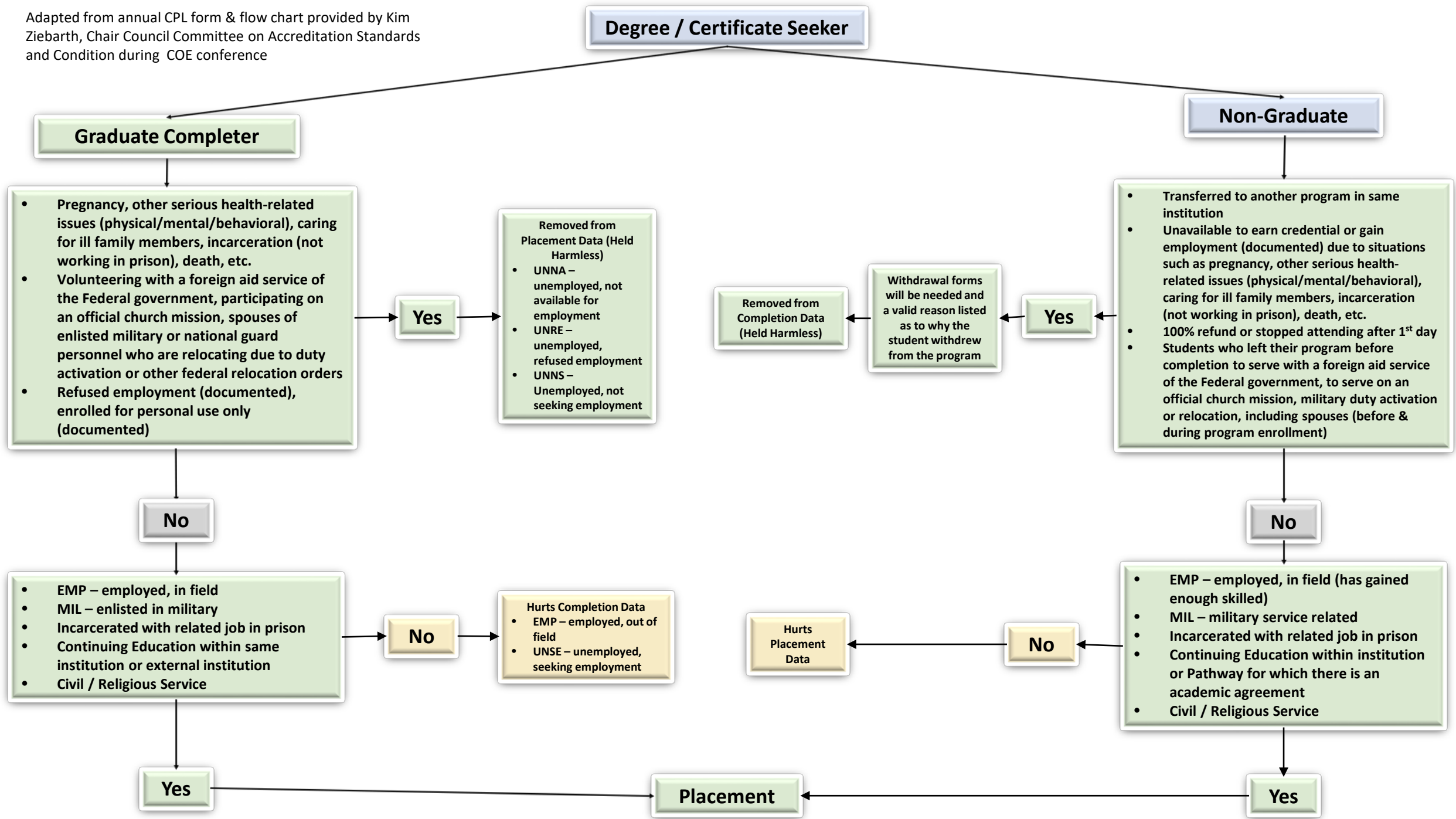
***Completer**—A student who has demonstrated the competencies required for a program and has been awarded the appropriate credential (graduate completer) or has acquired sufficient competencies through a program to become employed in the field of education pursued or a related field as evidenced by such employment (non-graduate completer).

***Graduate**—A student who has demonstrated the competencies required for a program and has been awarded the appropriate credential by the institution.

***Non-Graduate Completer**—A student who left the institution without a credential, but has acquired sufficient competencies through a program to become employed in the field of education pursued or a related field as evidenced by such employment. (See also: Graduate and Completer)

***Placement**—A completer of a program who (1) is employed in the field of education pursued or in a related field, or (2) has received the appropriate credential and entered the military or continued his/her education. Valid employment in the field or a related field includes placement in a permanent full- or part-time position with an employer or employment agency, or self-employment in the field of education or a related field. Internships and externships, either paid or unpaid, do not qualify as placements.

Adapted from annual CPL form & flow chart provided by Kim Ziebarth, Chair Council Committee on Accreditation Standards and Condition during COE conference



Degree / Certificate Seeker

Graduate Completer

- Pregnancy, other serious health-related issues (physical/mental/behavioral), caring for ill family members, incarceration (not working in prison), death, etc.
- Volunteering with a foreign aid service of the Federal government, participating on an official church mission, spouses of enlisted military or national guard personnel who are relocating due to duty activation or other federal relocation orders
- Refused employment (documented), enrolled for personal use only (documented)

Yes

- Removed from Placement Data (Held Harmless)
- UNNA – unemployed, not available for employment
 - UNRE – unemployed, refused employment
 - UNNS – Unemployed, not seeking employment

No

- EMP – employed, in field
- MIL – enlisted in military
- Incarcerated with related job in prison
- Continuing Education within same institution or external institution
- Civil / Religious Service

No

- Hurts Completion Data
- EMP – employed, out of field
 - UNSE – unemployed, seeking employment

Hurts Placement Data

Yes

Placement

Non-Graduate

- Transferred to another program in same institution
- Unavailable to earn credential or gain employment (documented) due to situations such as pregnancy, other serious health-related issues (physical/mental/behavioral), caring for ill family members, incarceration (not working in prison), death, etc.
- 100% refund or stopped attending after 1st day
- Students who left their program before completion to serve with a foreign aid service of the Federal government, to serve on an official church mission, military duty activation or relocation, including spouses (before & during program enrollment)

Yes

Withdrawal forms will be needed and a valid reason listed as to why the student withdrew from the program

Removed from Completion Data (Held Harmless)

No

- EMP – employed, in field (has gained enough skilled)
- MIL – military service related
- Incarcerated with related job in prison
- Continuing Education within institution or Pathway for which there is an academic agreement
- Civil / Religious Service

No

Hurts Placement Data

Yes

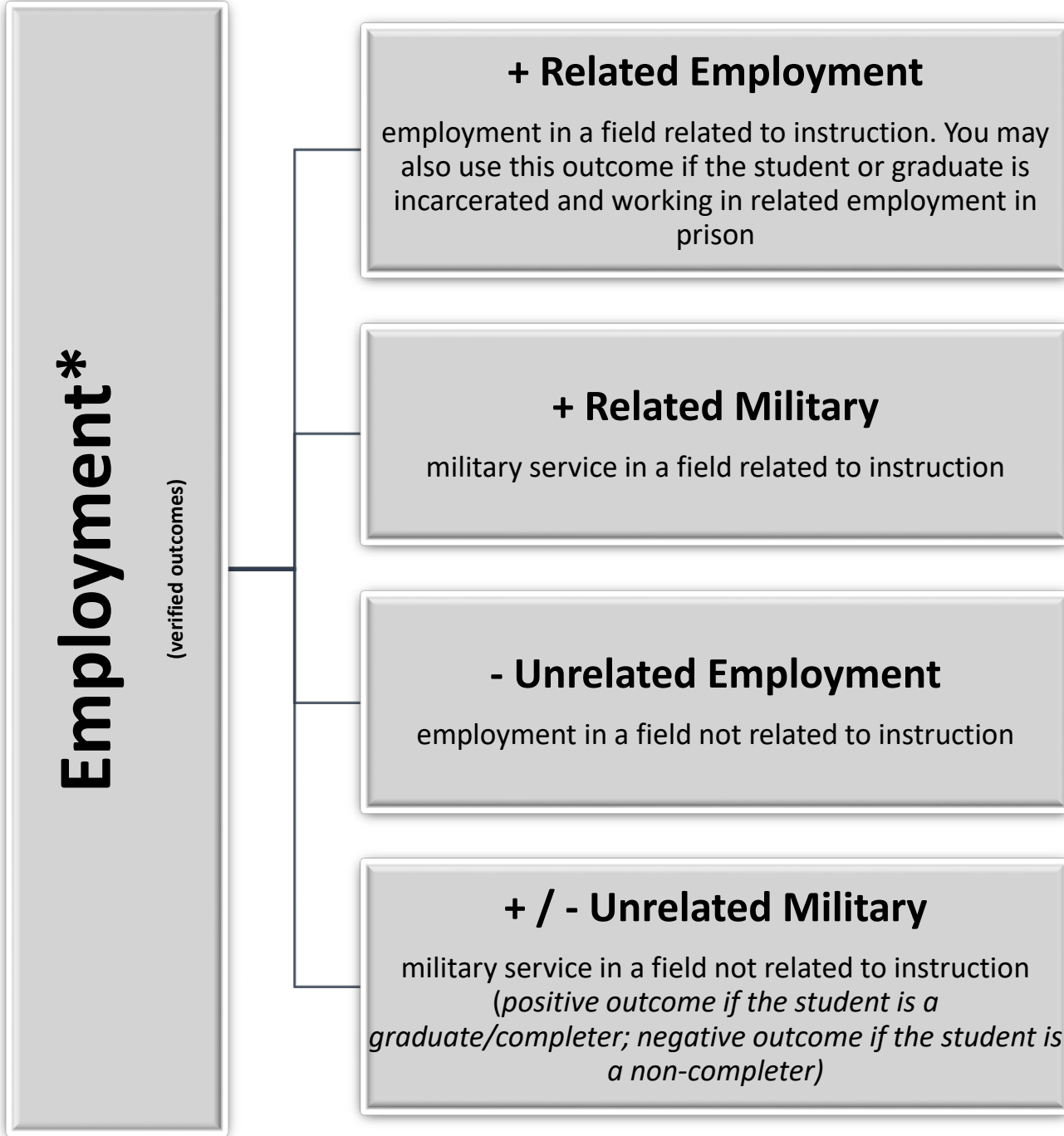


Chart adapted from handout provided by Kim Ziebarth, Chair Council Committee on Accreditation Standards and Condition during COE conference

*Note: absence of a positive outcome results in a negative outcome

Education*
(verified outcomes)

+ Continuing Education - Internal –
graduate or non-completer who transferred to another program within the institution

Pathway: Non-completer who continued their education with an academic partner, in a program for which there is an written academic agreement

+ / - Continuing Education - External
graduate or non-completer who continued their education in any higher education institution
(positive outcome for a graduate/completer, negative outcome for a non-completer)

Chart adapted from handout provided by Kim Ziebarth, Chair Council Committee on Accreditation Standards and Condition during COE conference

*Note: absence of a positive outcome results in a negative outcome

Other*
(verified outcomes)

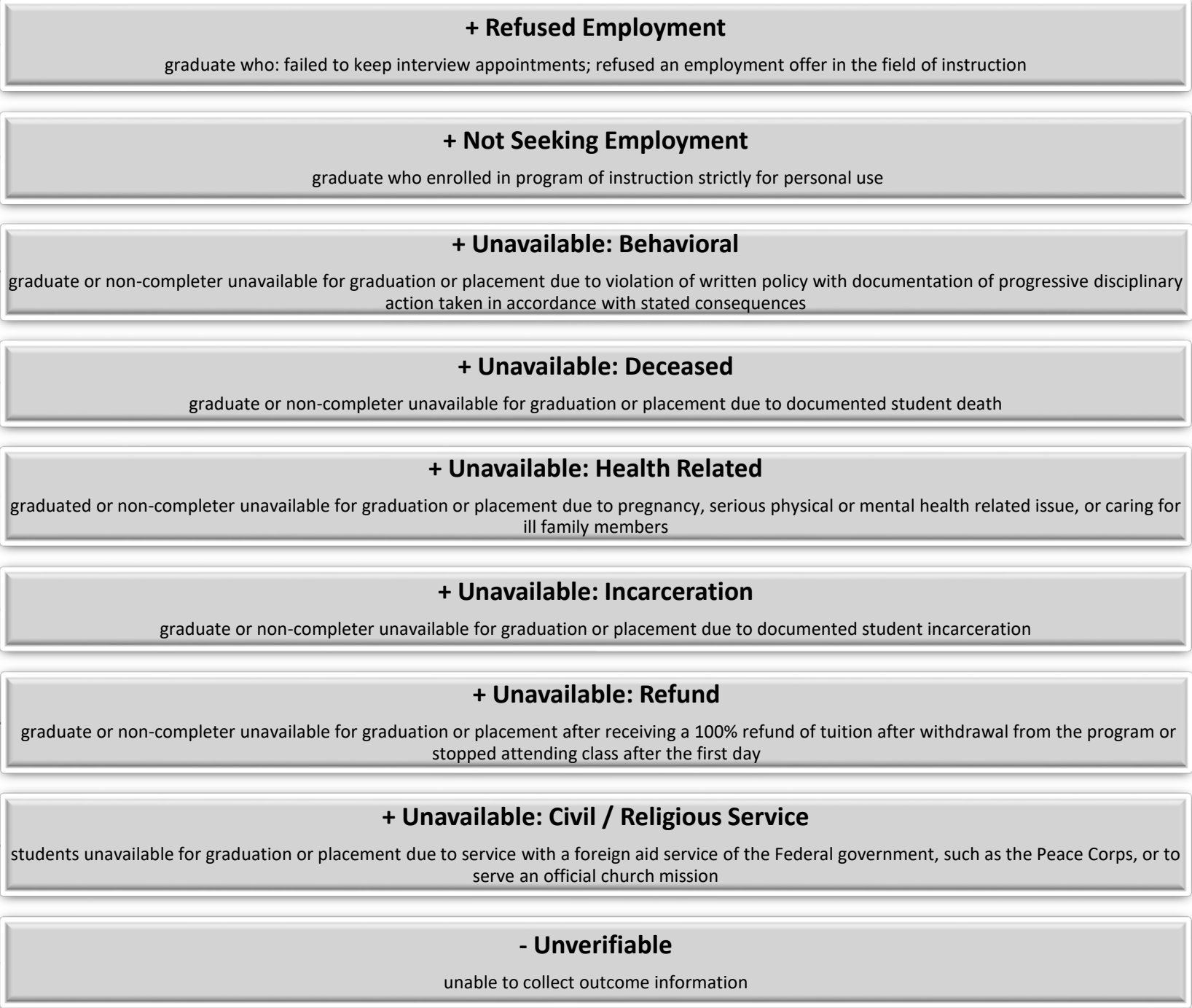


Chart adapted from handout provided by Kim Ziebarth, Chair Council Committee on Accreditation Standards and Condition during COE conference

*Note: absence of a positive outcome results in a negative outcome