

Project
Riverview Gardens High School

ITEM 1 - WALK IN COOLER/FREEZER COMBO (1 REQ'D)

American Panel Corporation Model No. WALK IN COOLER/FREEZER COMBO

Actual Ext. Dimensions:

21' - 10" X 12' - 0" X 9' - 6" high

Freezer Int. Dimensions:

11' - 4" X 10' - 5" X 8' - 10.25" high

-10° F Freezer

Cooler Int. Dimensions:

11' - 4" X 10' - 5" X 8' - 10.25" high

35° F Cooler

Floor Configuration:

Freezer:

Foamed-in-Place 4" Urethane floor panels

.100 Smooth Aluminum

Cooler:

Foamed-in-Place 4" Urethane floor panels

.100 Smooth Aluminum Metal

Finishes

Exposed Exterior:

26 ga. stucco acrylume

Unexposed Exterior:

26 ga. stucco acrylume Interior

Walls:

26 ga. stucco acrylume Interior

Ceiling:

26 ga. stucco acrylume

All panels are NSF 4" foamed-in-place urethane, UL classified with flame spread rating of 20.

Door Details

Hinged Walk-In Door(s) Qty. (2)

36" X 77" flush mount magnetic infitting door with cam-rise hinges, padlockable deadbolt handle (exterior doors only), closer, brushed hardware, fully programmable WALK-IN MONITORING SYSTEM 100 featuring audio/visual temperature alarm with digital thermometer, high & low set points, 115V output, energy saving door frame heater wire, vapor proof light & switch with pilot light.

Walk-In Accessories

Heated Pressure Relief Vent, Model

1825 (3" diam.), 120 volt 2 - Flex. Strip

Curtain, up to 36" x 77" Opening 2

2 - Floor Ramp, Interior (24" deep) for up to 42" door

LED Light Fixture, Cooler & Freezer, 48" 2-lamp(-40°F or higher operating temp.)

Refrigeration Design Criteria

Freezer

Refrigeration Walk-In Location Indoors

Cond. Unit Location Outdoors

Ambient Temp: 90° F

Ambient Temp: 100° F

Walk-In Temp: -10° F Freezer

System Capacity: 8,425 BTUH

Walk-In Heatload:

Located at altitude 470 ft., above sea level

Cooler

Refrigeration Walk-In Location Indoors

Cond. Unit Location Outdoors

Ambient Temp: 90° F

Ambient Temp: 100° F

Walk-In Temp: 35° F

Cooler System Capacity: 9,445 BTUH

Walk-In Heatload:

Located at altitude 470 ft., above sea level

Refrigeration Equipment

Freezer

3.50 HP hermetic air cooled refrigeration system -10° F Freezer 208/230/60/3

Includes an electric defrost evaporator coil

Includes 5-Year Compressor Warranty

Condensing Unit Model #: AVA2515ZTXC(2B3145-9)

Amp Draw: 16.6 A (Each)

Evaporator Model #: LET090

Amp Draw: 1A(Fans) / 8.2 A(Htr), (Each)

"Pre-Assembled Remote" refrigeration system. All controls are factory mounted. Refrigeration lines and refrigerant by others. Labor warranty provided by others. System to use R448a.

Cooler

1.25 HP hermetic air cooled refrigeration system 35° Cooler 208/230/60/3

Includes standard evaporator coil

Includes 5-Year Compressor Warranty

Condensing Unit Model #: M6KP-0127-TAC-072

Amp Draw: 8.3 A(Each)

Evaporator Model #: ADT104

Amp Draw: 1A(Fans) / 0 A(Htr), (Each)

"Pre-Assembled Remote" refrigeration system. All controls are factory mounted. Refrigeration lines and refrigerant by others. Labor warranty provided by others. System to use R448a.

Refrigeration Accessories

Galvanized Weather Cover – Qty 2

Steel Compressor Mounting Stand - Qty 2

LASA Winterization Controls, Package – Qty 2

One-year Labor Warranty on Pre-Assembled Refrigeration Systems

Include Shipping to Jobsite

ITEM 1.1 - TURNKEY WALK IN INSTALLATION (1 LOT REQ'D)

Custom Installation to include all work required for complete project, including all demo, construction, utilities, floor and wall finishes, and complete walk in assembly, refrigeration and startup

Construction and Installation Requirements

Demolish all masonry and frame walls as necessary to complete walk in installation as drawn.

Re-frame wall openings and trim out all openings in 14 gauge stainless steel.

Prepare and finish all work areas to like finish for surrounding rooms.

Prepare, repair and replace flooring as required with like flooring

Provide and install new A.C.T. ceiling in storage and office area

Receive, warehouse/stage, deliver to jobsite and assemble all walk in floor, wall and ceiling panels.

Fabricate and install matching flashing panels from walk in to surrounding walls and ceiling. Provide and install vinyl cove base trim at all floor locations.

Receive, warehouse/stage, deliver to jobsite and install all refrigeration components. Condensing units to be placed on roof above, on properly flashed in equipment rails.

Provide and install all refrigeration piping and insulation as necessary.

Refrigeration piping to run through properly flashed piping curb.

Provide and install all new electric circuits for new walk in unit, all conduit to rooftop to run through properly flashed piping penetration.

Install and wire all walk in lighting

Interwire and do all necessary control work for refrigeration and temperature monitoring system

Install all copper condensate drains from evaporators and run to new floor drain as indicated on drawing

Properly insulate and heat trace condensate drain piping

Provide and install new circuit and terminate to heat trace wiring

Properly evacuate and charge new refrigeration piping

Provide all electrical and control final connections

Startup and test walk ins and allow to cycle at temperature for at least two days.

ITEM 2 - CABINET, MOBILE, HOT HOLDING (2 REQ'D)

Hatco Model FSHC-17W1 Dimensions: 73.63(h) x 26(w) x 34.75(d)

Flav-R-Savor® Humidified Holding Cabinet, single Lexan® door, (17 pair) universal slides 3" OC adjustable on 1-1/2" OC, stainless steel construction, 5" swivel casters (two swivel with wheels locks, two rigid), NSF, cULus, Made in USA



ITEM 3 - OPEN ITEM

ITEM 4 - TABLE, WORK (1 REQ'D)

John Boos Model ST4-3684SBK Dimensions: 35.75(h) x 84(w) x 36(d)

Work Table, 84"W x 36"D, 14/300 stainless steel flat top, with Stallion Safety Edge front & back, 90° turndown on sides, stainless steel legs, side & rear adjustable bracing, adjustable bullet feet, NSF, CSA-Sanitation, KD



ITEM 5 - USED CUSTOM PREPARATION TABLE, (1 REQ'D)

Re-Purposed Custom Fabrication Dimensions: 35.75(h) x 162(w) x 34(d)

Work Table, 162"W x 34"D, Custom Fabricated to be installed as part of this renovation project, table to have a 3 well cold pan drop in unit, convenience "tombstone" outlets in multiple locations on top of table, integral double over shelves and pot rack.

Bidder to allocate \$ 7,850.00 in their bid to purchase this used and re-worked table as a part of their equipment package. Include pickup, delivery and installation separately in the Turnkey Installation scope of work. Contact Kurt Kaemmerlen at Kaemmerlen Facility Solutions (314)525-2222 for any questions pertaining to this item.

ITEM 6 - TABLE, WORK (2 REQ'D)

John Boos Model ST6R5-3060SBK Dimensions: 40.75(h) x 60(w) x 30(d)

Work Table, 60"W x 30"D, 16/300 stainless steel top with 5" backsplash, with Stallion Safety Edge front, 90° turndown on sides, stainless steel legs, side & rear adjustable bracing, adjustable bullet feet, NSF, CSA-Sanitation, KD



ITEM 7 - FREEZER, REACH-IN (1 REQ'D)

Continental Refrigerator Model 1FE Dimensions: 82.25(h) x 28.5(w) x 35.38(d)

Extra-Wide Freezer, reach-in, 28-1/2"W, one-section, self-contained refrigeration, stainless steel front, aluminum interior & ends, standard depth, full-height solid door, electronic control with digital display, hi-low alarm, electric condensate evaporator, 1/3 HP, cETLus, NSF, Made in USA



ELECTRICAL

	VOLTS	CYCLE	PHASE	CONN	AFF	NEMA	AMPS	KW	HP	MCA	MOCP
1									1/3		

ITEM 8 - REFRIGERATOR, REACH-IN (1 REQ'D)

Continental Refrigerator Model 2RE Dimensions: 82.25(h) x 57(w) x 35.38(d)

Extra-Wide Refrigerator, reach-in, 57"W, two-section, self-contained refrigeration, stainless steel front, aluminum interior & ends, standard depth, full-height solid doors, electronic control with digital display, hi-low alarm, electric condensate evaporator, 1/3 HP, cETLus, NSF, Made in USA



ELECTRICAL

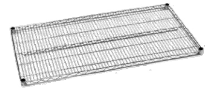
	VOLTS	CYCLE	PHASE	CONN	AFF	NEMA	AMPS	KW	HP	MCA	MOCP
1									1/3		

ITEM 9 - WIRE SHELVING (20 REQ'D)

Centaur Model C1848K Dimensions: 48(w) x 18(d)

Centaur®K Series Shelving, wire, 48"W x 18"D, green epoxy, NSF

- 20 ea Limited 7 year warranty against corrosion on all green epoxy shelves, posts & accessories
- 20 ea Model C74UK Centaur® Mobile Post, 73-7/8"H, casters sold separately (5" caster adds approx 6" to overall height) green epoxy
- 10 ea Model C5 Centaur® Caster, 5" x 1-1/4", stem/swivel, 200 lb. capacity, resilient wheel tread
- 10 ea Model C5B Centaur® Caster, 5" x 1-1/4", stem/brake, 200 lb. capacity, resilient wheel tread



ITEM 10 - MOP SINK (1 REQ'D)

John Boos Model PBMS2016-12-X Dimensions: 16(h) x 24.63(w) x 19.38(d)

Mop Sink, floor mounted, 24-5/8"W x 19-3/8"D x 16"H overall size, 20"W x 16" front-to-back x 12" deep compartment, 3-1/2" diameter drain, marine edge on front & sides, tile edge on rear, 16/300 stainless steel construction (FLYER NET PRICING FOR EFFINGHAM AND NEVADA)

- 1 ea Model PBF-SS-6-X Service Sink Faucet, vacuum breaker nozzle with 3-4" garden hose thread, pail hook, top support arm, 1/2" NPT female flanged, with adjustable inlet with screwdriver stop (FLYER NET PRICING FOR EFFINGHAM AND NEVADA)
- 1 kt Model PB-SMMK-90 Splash Mount Faucet Mounting Kit, includes (2) 1/2" supply nipples, (2) retainer nuts, (2) lock washers, (2) rubber washers and (2) male & female short 90° elbows



WATER WASTE

	HOT SIZE	HOT AFF	HOT GPH	COLD SIZE	COLD AFF	FILTERED SIZE	FILTERED AFF	CONDENSER INLET SIZE	CONDENSER OUTLET SIZE
1									
2	1/2"			1/2"					

	INDIRECT SIZE	DIRECT SIZE
1		
2		

PLUMBING 1 REMARKS

3-1/2" drain opening

ITEM 11 - SINK, SCULLERY, 3 COMPARTMENTS (1 REQ'D)

John Boos Model 3B20304-2D24 Dimensions: 43(h) x 111(w) x 35.5(d)

Sink, 3-compartment, 111"W x 35-1/2"D x 43"H overall size, (3) 20"W x 30" front-to-back x 14" deep compartments, (2) 24" left & right drainboards, 10"H boxed backsplash with 45° top and 2" return, (1) set of splash mount faucet holes, 3-1/2" die-stamped drain opening, 16/300 stainless steel construction, stainless steel legs, adjustable side bracing, gussets, & adjustable bullet feet, NSF, CSA-Sanitation

- 3 ea Model PB-LWR-1 Twist Handle Lever Waste, for 3-1/2" industry standard sink opening, standard valve, basket strainer (includes an adapter for either 2" or 1-1/2" drain outlet)



WATER

	HOT SIZE	HOT AFF	HOT GPH	COLD SIZE	COLD AFF	FILTERED SIZE	FILTERED AFF	CONDENSER INLET SIZE	CONDENSER OUTLET SIZE
1									
2									
3									

WASTE

	INDIRECT SIZE	DIRECT SIZE
1		
2		
3		

PLUMBING 1 REMARKS

(1) set of 1-1/8" faucet holes, 8" centers, 3-1/2" drain opening

PLUMBING 2 REMARKS

3-1/2" drain opening

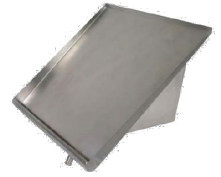
PLUMBING 3 REMARKS

3-1/2" drain opening

ITEM 12 - SHELF, SOLID SORTING (3 REQ'D)

John Boos Model PB-SRW-42 Dimensions: 16.5(h) x 42(w) x 18(d)

Sorting Shelf, 42"W x 18"D X 16-1/2"H, holds (2) racks, wall mounted, solid, includes brackets, 18/300 stainless steel, NSF



ITEM 13 - DISHTABLE, 'L' SHAPE, 14 GAUGE (1 REQ'D)

John Boos Model SDT4-L7072SBK-L Dimensions: 44.06(h)

Pro-Bowl Soiled Dishtable, landing design, 70" machine to corner, 72" corner to end, 44"H overall size, L-shaped with 10" landing shelf, left-to-right operation, (1) 20"W x 20" front-to-back x 8" deep pre-rinse sink bowl, 10"H boxed backsplash with 45° top & 2" return, (1) set of splash mount faucet holes with 8" centers, Pre-rinse spray assembly, scrap basket sink insert, 2- 1/4"H rolled edge, 14/300 stainless steel top, stainless steel legs, bracing, & adjustable bullet feet, NSF



WATER

	HOT SIZE	HOT AFF	HOT GPH	COLD SIZE	COLD AFF	FILTERED SIZE	FILTERED AFF	CONDENSER INLET SIZE	CONDENSER OUTLET SIZE
1									

WASTE

	INDIRECT SIZE	DIRECT SIZE
1		

PLUMBING 1 REMARKS

(1) set of 1" faucet holes, 8" centers, 3-1/2" drain opening

ITEM 14 - DISHTABLE, 'L' SHAPE, 14 GAUGE (1 REQ'D)

John Boos Model CDT4-I6072SBK-R Dimensions: 44.06(h)

Pro-Bowl Clean Dishtable, island design, 60" machine to corner, 72" corner to end, 44"H, L-shaped, left-to-right operation, 10"H boxed backsplash with 45° top & 2" return, 2-1/4"H rolled edge, 14/300 stainless steel top, stainless steel legs, bracing, & adjustable bullet feet, NSF



ITEM 15 - TILTING SKILLET BRAISING PAN, GAS (1 REQ'D)

Groen Model BPP-40GA Dimensions: 43.5(h) x 48(w) x 39.75(d)

Braising Pan, gas, 40-gallon capacity, 10" deep pan, 38" pan height, IPX6 water rated electronic Advanced controls with digital display, 1 minute to 10 hour timer, 175° - 400°F preset temperatures along with manual setting capability, power tilt, standard etch marks, faucet bracket, round tubular open leg base, stainless steel construction, bullet feet, electric spark ignition, 144,000 BTU/hr, cCSAus, NSF, Made in USA



- 1 ea (K-12 School purchases only) Two year parts and labor warranty
- 1 ea Natural gas
- 1 ea Model ELEVO-2000 For elevation between 0 and 2000 (When order is placed, all equipment with elevation specified will be assigned a different Part# by the factory)
- 1 ea 115v/60/1-ph, 5.0 amps, std.
- 1 ea Model 140144 Gas Quick Disconnect, with AGA approved restraint chain for steamers, tilting braising pans & table top & floor model kettles
- 1 ea 2" Tangent draw-off with perforated strainer
- 1 ea Model 150498 Drain Cart & Trough Assembly
- 1 ea Model Z091869 Faucet, single pantry, with swing spout

ELECTRICAL

	VOLTS	CYCLE	PHASE	CONN	AFF	NEMA	AMPS	KW	HP	MCA	MOCP
1	115	60	1				5.0				

GAS

	SIZE	MBTU	KW
1	1/2"	144.0	

WATER

	HOT SIZE	HOT AFF	HOT GPH	COLD SIZE	COLD AFF	FILTERED SIZE	FILTERED AFF	CONDENSER INLET SIZE	CONDENSER OUTLET SIZE
1				1/2"					

ITEM 16 - HD RANGE, 36", 6 OPEN BURNERS (1 REQ'D)

Montague Company Model 136-5 Dimensions: 36(h) x 36(w) x 37.25(d)

Legend™ Heavy Duty Range, gas, 36", (6) 12" 30,000 BTU open burners, standard oven base, stainless steel front & 4" flue riser, black sides, 6" high adjustable stainless steel legs, 220,000 BTU, NSF, cETLus, CE



- 1 ea Standard warranty: one year parts and labor warranty
- 1 ea Natural gas
- 1 ea 1-1/4 Rear gas connection in lieu of front manifold
- 1 ea Casters with 5" wheel 6" OA (set of 4)

GAS

	SIZE	MBTU	KW
1		220.0	
2	1-1/4"		

ITEM 17 - KETTLE, GAS, TILTING (1 REQ'D)

Groen Model DH-40C Dimensions: 43.13(h) x 47(w) x 34.63(d)

Tilting Kettle, gas, 40-gallon capacity, crank tilt, 2/3 jacket, IPX6 water rated electronic Classic controls, 316 stainless steel liner, floor mounted control console supports, stainless steel construction, bullet feet, electronic ignition, 50 PSI, 0 - 2000' elevation, 100,000 BTU, cCSAus, NSF, Made in USA



- 1 ea (1) year parts & labor, (10) year hemisphere warranty, standard
- 1 ea Natural gas
- 1 ea Model ELEV0-2000 For elevation between 0 and 2000 (When order is placed, all equipment with elevation specified will be assigned a different Part# by the factory)
- 1 ea 115v/60/1-ph, 5.0 amps, std.
- 1 ea 2" Tangent draw-off (TDO)
- 1 ea Model Z091876 Faucet, single pantry, with swing spout
- 1 ea Model 140144 Gas Quick Disconnect, with AGA approved restraint chain for steamers, tilting braising pans & table top & floor model kettles

ELECTRICAL

	VOLTS	CYCLE	PHASE	CONN	AFF	NEMA	AMPS	KW	HP	MCA	MOCP
1	115	60	1				5.0				

GAS

	SIZE	MBTU	KW
1	1/2"	100.0	

WATER

	HOT SIZE	HOT AFF	HOT GPH	COLD SIZE	COLD AFF	FILTERED SIZE	FILTERED AFF	CONDENSER INLET SIZE	CONDENSER OUTLET SIZE
1				1/2"					

ITEM 18 - OVEN, CONVECTION, GAS (2 REQ'D)

Montague Company Model 2-115A Dimensions: 78(h) x 38.25(w) x 39.5(d)

Vectaire Convection Oven, gas, double-deck, bakery depth, thermostatic controls, single speed fan, vertical opening doors with windows, stainless steel top, front & sides, 3" high flue deflector with stainless steel front trim, 6" adjustable legs, 115,000 BTU per deck, NSF, CSA Star



GAS

	SIZE	MBTU	KW
1	3/4"	115.0	
2	3/4"	115.0	

ITEM 19 - MILK COOLER (2 REQ'D)

Beverage Air Model ST34N-W Dimensions: 34(w) x 31-1/2(d)

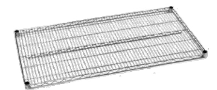
School milk cooler, 34"W, 31-1/2" D, 13.6 cu. ft., dual access, flat top carton capacities, (8) 13"x13"x11" or (4) 19" x 13" x 11" case capacities, with stainless steel doors, white exterior, galvanized interior, 4" heavy duty casters, (2) with brakes, ¼ hp, cUL, UL-EPH, NSF, Made in USA, Energy Star

ITEM 20 - WIRE SHELVING (60 REQ'D)

Centaur Model C1848K Dimensions: 48(w) x 24(d)

Centaur®K Series Shelving, wire, 48"W x 24"D, green epoxy, NSF

- 60 ea Limited 7 year warranty against corrosion on all green epoxy shelves, posts & accessories
- 60 ea Model C63UK Centaur® Mobile Post, 61-13/16"H, casters sold separately (5" caster adds approx 6" to overall height) green epoxy
- 30 ea Model C5 Centaur® Caster, 5" x 1-1/4", stem/swivel, 200 lb. capacity, resilient wheel tread
- 30 ea Model C5B Centaur® Caster, 5" x 1-1/4", stem/brake, 200 lb. capacity, resilient wheel tread

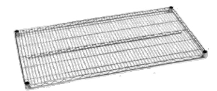


ITEM 21 - WIRE SHELVING (40 REQ'D)

Centaur Model C1848K Dimensions: 48(w) x 24(d)

Centaur®K Series Shelving, wire, 48"W x 24"D, green epoxy, NSF

- 40 ea Limited 7 year warranty against corrosion on all green epoxy shelves, posts & accessories
- 40 ea Model C63UK Centaur® Mobile Post, 61-13/16"H, casters sold separately (5" caster adds approx 6" to overall height) green epoxy
- 20 ea Model C5 Centaur® Caster, 5" x 1-1/4", stem/swivel, 200 lb. capacity, resilient wheel tread
- 20 ea Model C5B Centaur® Caster, 5" x 1-1/4", stem/brake, 200 lb. capacity, resilient wheel tread



ITEM 22 - OPEN NUMBER

ITEM 23 - SINK, HAND, WALL MOUNT (3 REQ'D)

John Boos Model PBHS-W-1410 Dimensions: 13.13(h) x 17(w) x 15.5(d)

Pro-Bowl Hand Sink, wall mount, 14"W x 10" front-to-back x 5" deep bowl, splash mount faucet holes with 4" centers, 1-7/8" drain opening with basket drain, includes mounting bracket, all stainless steel construction, NSF, CSA-Sanitation (faucet NOT included)



3 ea Model PBF-4SM-3GLF Heavy Duty Faucet, splash mount, 3-1/2" gooseneck spout, 4" centers, 1/4 turn ceramic cartridges, color coded hot/cold indicators, integral check valve, 1/2" NPT, chrome finish, NSF, cCSAus, ADA Compliant (LEAD FREE FAUCET)

WATER

	HOT SIZE	HOT AFF	HOT GPH	COLD SIZE	COLD AFF	FILTERED SIZE	FILTERED AFF	CONDENSER INLET SIZE	CONDENSER OUTLET SIZE
1									
2	1/2"			1/2"					

WASTE

	INDIRECT SIZE	DIRECT SIZE
1		
2		

PLUMBING 1 REMARKS

(1) set of 1" faucet holes, 4" centers, 1-7/8" drain opening

PLUMBING 2 REMARKS

4" centers

ITEM 24 - TABLE, WORK (1 REQ'D)

John Boos Model ST6R5-3060SSK Dimensions: 40.75(h) x 60(w) x 30(d)

Work Table, 60"W x 30"D, 16/300 stainless steel top with 5" backsplash, with Stallion Safety Edge front, 90° turndown on sides, stainless steel legs & adjustable undershelf, adjustable bullet feet, NSF, CSA-Sanitation, KD



ITEM 25 - TABLE, PREP W/ SINK (2 REQ'D)

John Boos Model PB-DL-3096R Dimensions: 45.325(h) x 96(w) x 30(d)

Table, Prep w/ Sink

ITEM 26 - WORK TABLE, 36", STAINLESS STEEL TOP (1 REQ'D)

John Boos Model ST4R5-3636GBK Dimensions: 40.75(h) x 36(w) x 36(d)

Work Table, 36"W x 36"D, 14/300 stainless steel top with 5" backsplash, with Stallion Safety Edge front, 90° turndown on sides, galvanized legs, side & rear adjustable bracing, adjustable bullet feet, NSF, CSA-Sanitation, KD



ITEM 27 - RENOVATION WORK TO SERVING LINES (1 LOT REQ'D)

Custom Fabrication by Fixture Contracting, Inc. New front laminate panels, New solid surface tray slide. Fixture Contracting will fabricate and install these items. Contact Tony Albers (314) 581-4648 for quotation and any questions, reference quote # 370.

ITEM 28 - CUSTOM WALL ARTWORK IN SERVING AREA (1 LOT REQ'D)

Custom wall logos and artwork by CK Wall Works. New artwork and logos to be painted / applied in serving area. Note: serving area to be painted in Turnkey Installation Scope. Contact Carla Krazl (314) 997-2030 for quotation and any questions.

ITEM 29 - FIRE SUPPRESSION SYSTEM (1 REQ'D)

Re-use / re-work existing fire suppression system as necessary to properly protect new cooking equipment layout under existing hood canopy. Any required work to existing system to meet any newer codes should be performed.

ITEM 30 - TURNKEY CONSTRUCTION AND INSTALLATION (1 LOT REQ'D)

Complete Installation to include all demolition, framing / finishes, flooring, ceiling and all mechanical, electrical and plumbing required for a complete finished kitchen renovation.

Construction and Installation Requirements

Demolish all masonry and frame walls as necessary to complete new kitchen layout.

Remove all de-commissioned walk in walls, floors, ceilings and refrigeration components and properly dispose of. All utilities to existing walk in components to be removed back to their source.

Disconnect, remove (and re-use where necessary), existing kitchen equipment. All equipment not being re-used to be removed and disposed of. Please verify with owner before disposing of any equipment.

Close up two (2) existing dish pass thru openings from dish room to cafeterias. Remove all rotted and compromised wall in and around openings and re-frame as necessary. Finish exterior in cafeteria areas with moisture resistant gypsum, tape and paint (paint color to be determined). Finish inside of dish room with moisture resistant gypsum and cover, trim with stainless steel wall paneling.

Rework and/or provide new plumbing rough ins as necessary to accommodate new equipment and kitchen layout. Any unused grease traps, water lines, drains, etc. to be properly removed and capped back at a source outside of kitchen area. Plumbing work must include all necessary floor demolition, cutting, coring, and all necessary repairs and rework with like quarry tile.

Rework and/or provide new electrical rough ins as necessary to accommodate new equipment and kitchen layout. Any unused electrical circuits to be properly blanked off and noted at electrical panels.

After all new plumbing and electrical demolition and rough ins are complete, prepare, repair and replace flooring as required with like flooring.

Provide and install new 2x4 LED lay in fixtures to replace existing. In kitchen and serving areas install Metalux Skyridge series, catalog # 24SR-LD2-48-C-UNV-L840-CD1, LED fixtures. For dish room install Cooper Industries catalog # 24FP4740C flat panel LED fixtures. Verify and rewire accordingly for any emergency or night light fixtures.

Provide and install six (6) new porcelain pendant fixtures over the serving lines (3 per side). Fixtures to be Barn Light Company, catalog "Original Warehouse Pendant", 14" shade, Royal Blue (700) color, damp listed cord drop, canopy color same as shade, no guard or glass, standard E26 socket. Verify location of pendants with owner before hanging.

Repair and re-work existing ACT ceiling as necessary for new kitchen and dish room layouts.

Receive, warehouse/stage, deliver to jobsite and assemble all new equipment as listed on above specifications and as shown on drawing.

Rework dish room layout as shown, re-locate existing machine with new dish tables.

Fabricate and install new welded stainless steel ductwork for re-located dish machine and tie into existing ventilation.

Make all final utility connections to all equipment and make ready for startup and testing.

Paint all walls in serving area. Color to be determined by CK Wall Works. Coordinate with CK Wall Works for painting and preparation required for new wall logos and artwork.

Coordinate installation of new serving area panels and trayslide with Fixture Contracting.

Provide a final cleaning of kitchen, serving area and dish room prior to turning space over to owner.

Startup and test all equipment per manufacturers specifications. All refrigeration equipment is to be started up at least two days prior to owner wanting to stock.

END OF SPECIFICATIONS