

ATTACHMENT D: LOCATIONS FOR VOIP SYSTEM

	Quantity
Danforth Elementary School	
Components include:	
NEC 2000	1
Cabinet Assembly with Power Supply	1
Central Processing Unit	1
T1 Connectivity Card	1
CSU for T1 Card	1
Application Processor	1
D Channel Controller	1
Battery Backup System	1
Digital Voice Ports	60
Central Office Trunk Ports	8
Analog Station Ports	4
Voice Messaging Ports-Centralized	
ECEC	
Components Include:	
NEC 2000	1
Cabinet Assembly with Power Supply	1
Central Processing Unit	1
T1 Connectivity Card	1
CSU for T1 Card	1
Application Processor	1
D Channel Controller	1
Battery Backup System	1
Digital Voice Ports	64
Analog Station Ports	4
Central Office Trunk Ports	4
Voice Messaging Ports - Centralized	
Gibson Elementary School	
Components include:	
NEC 2000	1
Cabinet Assembly with Power Supply	1
Central Processing Unit	1
T1 Connectivity Card	1
CSU for T1 Card	1
Application Processor	1
D Channel Controller	1
Battery Backup System	1
Digital Voice Ports	56

ATTACHMENT D: LOCATIONS FOR VOIP SYSTEM

	Quantity
Central Office Trunk Ports	8
Analog Station Ports	4
Voice Messaging Ports-Centralized	
 Glasgow Elementary School	
Components include:	
NEC 2000	1
Cabinet Assembly with Power Supply	1
Central Processing Unit	1
T1 Connectivity Card	1
CSU for T1 Card	1
Application Processor	1
D Channel Controller	1
Battery Backup System	1
Digital Voice Ports	56
Central Office Trunk Ports	8
Analog Station Ports	4
Voice Messaging Ports-Centralized	
 Highland Elementary School	
Components include:	
NEC 2000	1
Cabinet Assembly with Power Supply	1
Central Processing Unit	1
T1 Connectivity Card	1
CSU for T1 Card	1
Application Processor	1
D Channel Controller	1
Battery Backup System	1
Digital Voice Ports	56
Central Office Trunk Ports	4
Analog Station Ports	4
Voice Messaging Ports-Centralized	
 Koch Elementary School	
Components include:	
NEC 2000	1
Cabinet Assembly with Power Supply	1
Central Processing Unit	1
T1 Connectivity Card	1
CSU for T1 Card	1
Application Processor	1
D Channel Controller	1
Battery Backup System	1
Digital Voice Ports	52

ATTACHMENT D: LOCATIONS FOR VOIP SYSTEM

	Quantity
Central Office Trunk Ports	8
Analog Station Ports	4
Voice Messaging Ports-Centralized	
 Lemasters Elementary School	
Components include:	
NEC 2000	1
Cabinet Assembly with Power Supply	1
Central Processing Unit	1
T1 Connectivity Card	1
CSU for T1 Card	1
Application Processor	1
D Channel Controller	1
Battery Backup System	1
Digital Voice Ports	60
Central Office Trunk Ports	8
Analog Station Ports	4
Voice Messaging Ports-Centralized	
 Lewis & Clark Elementary School	
Components include:	
NEC 2000	1
Cabinet Assembly with Power Supply	1
Central Processing Unit	1
T1 Connectivity Card	1
CSU for T1 Card	1
Application Processor	1
D Channel Controller	1
Battery Backup System	1
Digital Voice Ports	56
Central Office Trunk Ports	8
Analog Station Ports	8
Voice Messaging Ports-Centralized	
 Meadows Elementary School	
Components include:	
NEC 2000	1
Cabinet Assembly with Power Supply	1
Central Processing Unit	1
T1 Connectivity Card	1
CSU for T1 Card	1
Application Processor	1
D Channel Controller	1
Battery Backup System	1
Digital Voice Ports	56
Central Office Trunk Ports	8

ATTACHMENT D: LOCATIONS FOR VOIP SYSTEM

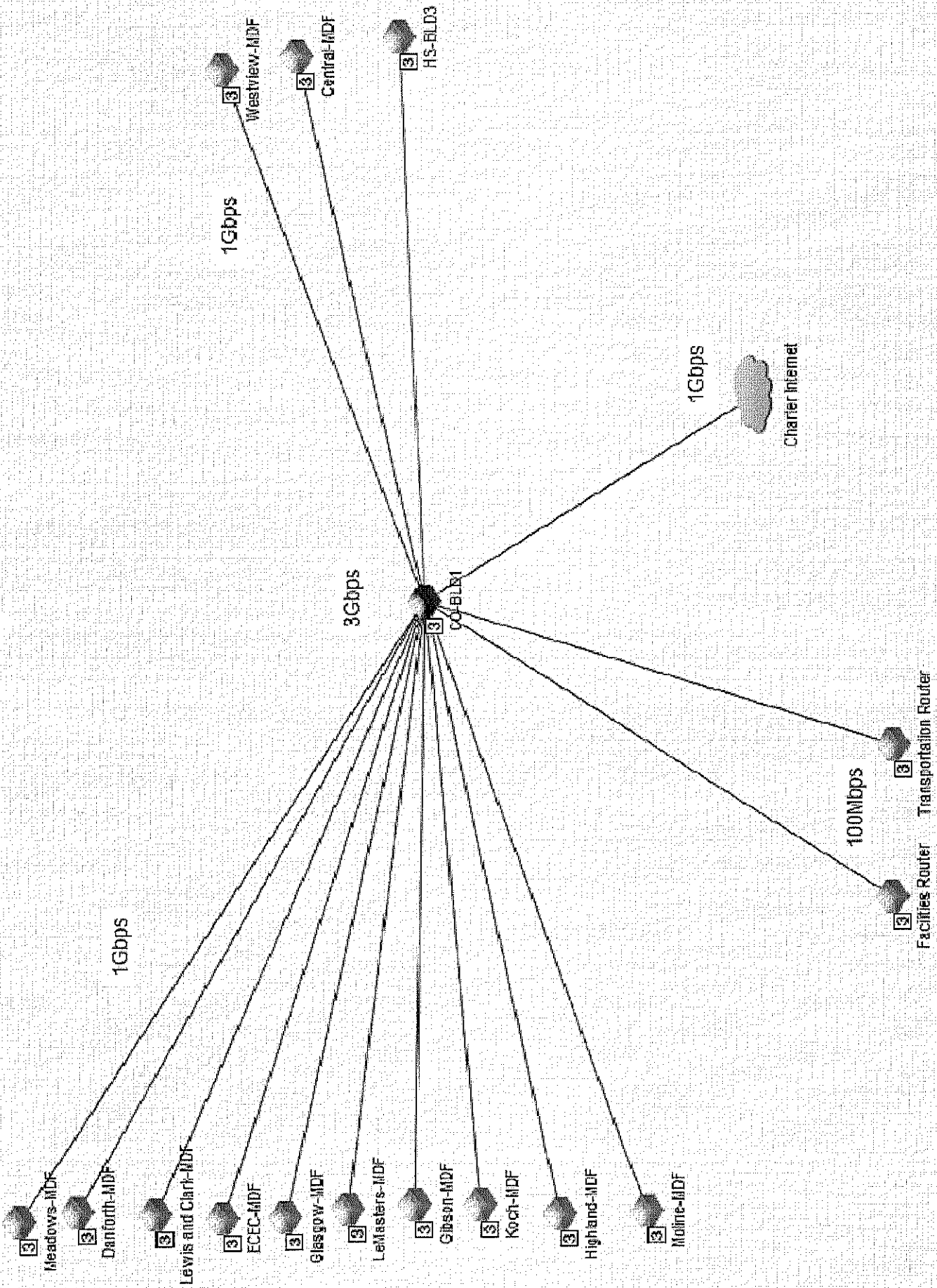
	Quantity
Analog Station Ports	8
Voice Messaging Ports-Centralized	
 Moline Elementary School	
Components include:	
NEC 2400 and NEC 2000	1 each
Cabinet Assembly with Power Supply	2
Central Processing Unit	2
T1 Connectivity Card	2
CSU for T1 Card	2
Application Processor	2
D Channel Controller	2
Battery Backup System	2
Digital Voice Ports	164
Central Office Trunk Ports	16
Analog Station Ports	16
Voice Messaging Ports-Centralized	
Digital Trunk Ports--PRI	2
 Westview Middle School	
Components include:	
NEC 2000	1
Cabinet Assembly with Power Supply	1
Central Processing Unit	1
T1 Connectivity Card	1
CSU for T1 Card	1
Application Processor	1
D Channel Controller	1
Battery Backup System	1
Digital Voice Ports	136
Central Office Trunk Ports	8
Analog Station Ports	16
Voice Messaging Ports-Centralized	
 Senior High School	
Components include:	
NEC 2000	1
Cabinet Assembly with Power Supply	1
Central Processing Unit	1
T1 Connectivity Card	1
CSU for T1 Card	1
Application Processor	1
D Channel Controller	1
Battery Backup System	1
Digital Voice Ports	136
Central Office Trunk Ports-PRI	1
Analog Station Ports	24
Voice Messaging Ports-Centralized	

ATTACHMENT D: LOCATIONS FOR VOIP SYSTEM

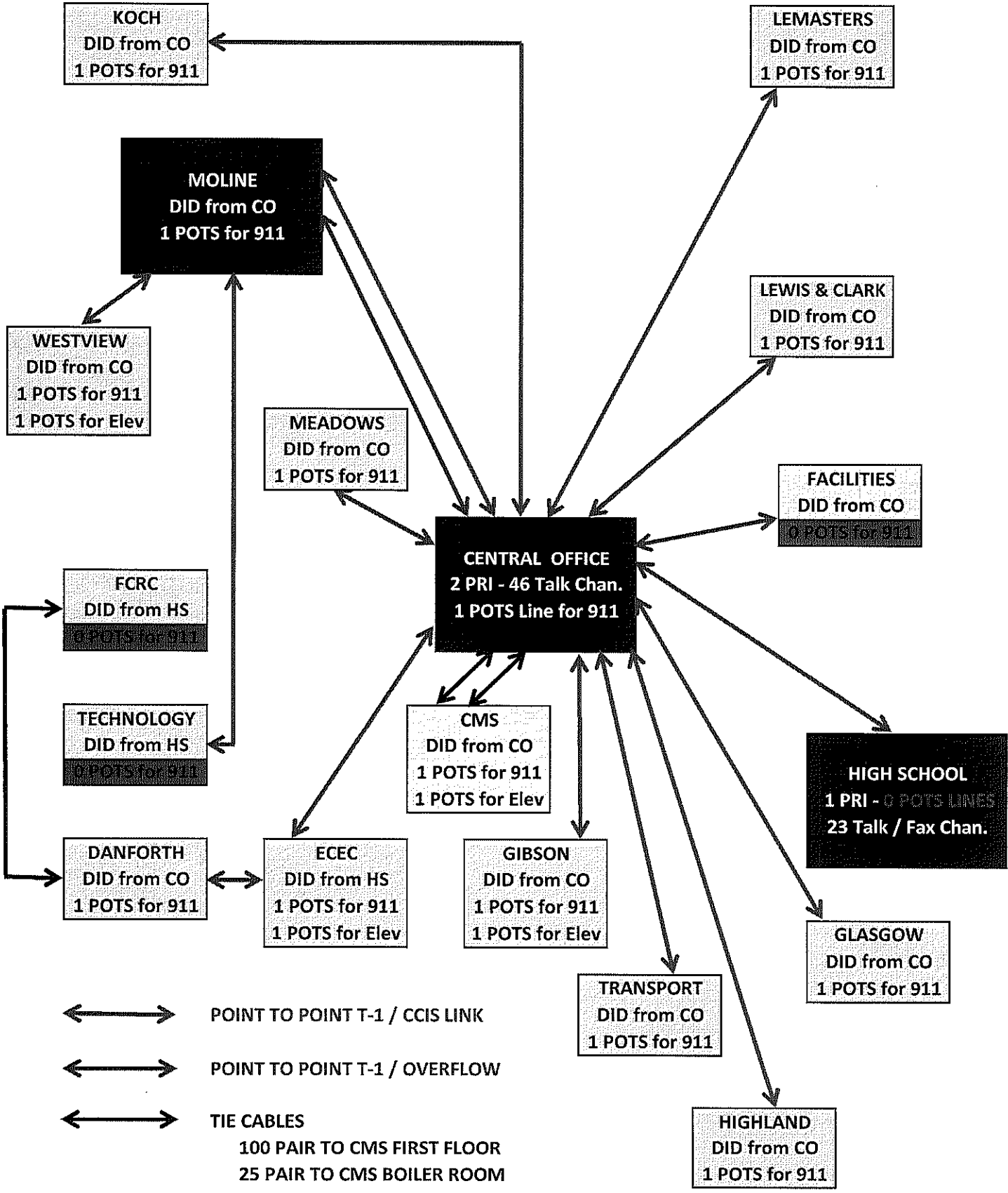
	Quantity
Admin Building	
(Includes Central Middle School)	
Components include:	
NEC 2400	1
Cabinet Assembly with Power Supply	1
Central Processing Unit	1
T1 Connectivity Card	12
CSU for T1 Card	1
Application Processor	1
D Channel Controller	1
Battery Backup System	1
Digital Voice Ports	96
Central Office Trunk Ports	32
Analog Station Ports	64
Voice Messaging Ports-Centralized	24
Digital Trunk Ports-PRI	2
Maintenance	
Components include:	
DRU	1
Cabinet Assembly with Power Supply	1
Central Processing Unit	1
T1 Connectivity Card	1
CSU for T1 Card	1
Application Processor	1
D Channel Controller	1
Battery Backup System	1
Digital Voice Ports	30
Central Office Trunk Ports	4
Analog Station Ports	4
Voice Messaging Ports - Centralized	
FCRC	
Components include:	
NEC 2000	1
Cabinet Assembly with Power Supply	1
Central Processing Unit	1
T1 Connectivity Card	1
CSU for T1 Card	1
Application Processor	1
D Channel Controller	1
Battery Backup System	1
Digital Voice Ports	68
Central Office Trunk Ports	12
Analog Station Ports	8

ATTACHMENT D: LOCATIONS FOR VOIP SYSTEM

	Quantity
Voice Messaging Ports - Centralized	
Transportation	
Components Include:	
NEC 1000	1
Cabinet Assembly with Power Supply	1
Central Processing Unit	1
T1 Connectivity Card	1
CSU for T1 Card	1
Application Processor	1
D Channel Controller	1
Battery Backup System	1
Digital Voice Ports	8
Central Office Trunk Ports	4
Analog Station Ports	4
Voice Messaging Ports - Centralized	



RGSD PBX CIRCUITS - CURRENT



50 PAIR TO FCRC MULTIPLIED IN TECHNOLOGY

RGSD PBX CIRCUITS - CURRENT

