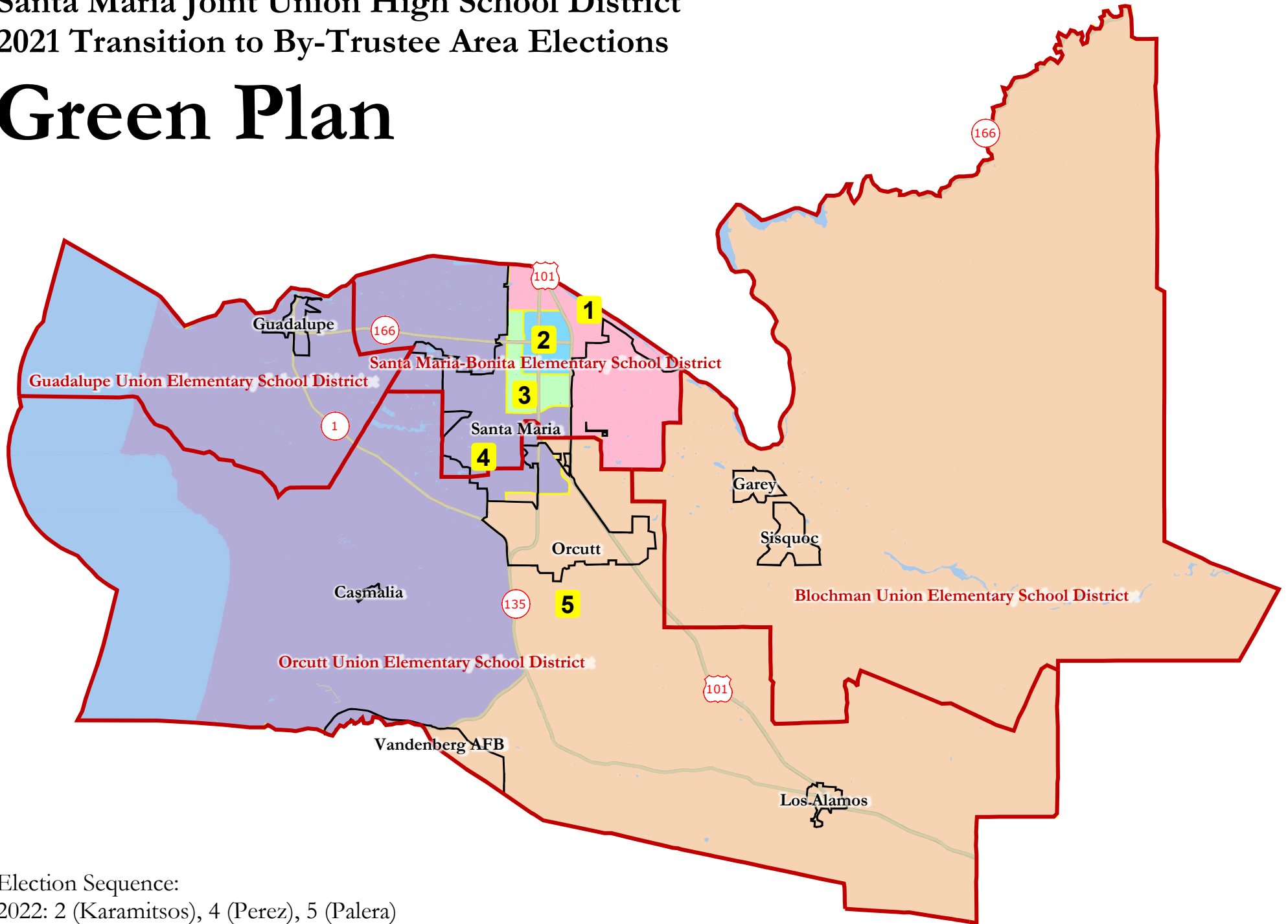


Santa Maria Joint Union High School District 2021 Transition to By-Trustee Area Elections

Green Plan



Election Sequence:

2022: 2 (Karamitsos), 4 (Perez), 5 (Palera)

2024: 1 (Garvin), 3 (Lopez)

Santa Maria Joint Union High School District - Green Plan

Category	Field	1	2	3	4	5	Total
2020 Census	Total Population	32,673	30,075	31,520	31,651	30,857	156,776
	Population Deviation	1,318	-1,280	165	296	-498	2,598
	Pct. Deviation	4.20%	-4.08%	0.53%	0.94%	-1.59%	8.29%
Total Pop.	Hispanic/Latino	74%	82%	86%	64%	32%	68%
	NH White	17%	12%	8%	26%	57%	24%
	NH Black	1%	1%	1%	2%	1%	1%
	NH Asian/Pac.Isl.	7%	3%	5%	7%	7%	6%
	NH Native Amer.	1%	1%	1%	1%	2%	1%
Citizen Voting Age Pop	Total	16,766	10,446	9,721	17,291	22,586	76,810
	Hisp	59%	59%	67%	49%	21%	47%
	NH White	30%	34%	22%	39%	71%	44%
	NH Black	2%	2%	2%	3%	2%	2%
	Asian/Pac.Isl.	8%	5%	9%	9%	7%	8%
	Native Amer.	0%	1%	1%	1%	2%	1%
Voter Registration (Nov 2020)	Total	14,713	8,374	8,027	14,889	20,916	66,919
	Latino est.	64%	64%	75%	52%	23%	50%
	Spanish-Surnamed	58%	59%	69%	48%	22%	46%
	Asian-Surnamed	1%	2%	1%	2%	2%	2%
	Filipino-Surnamed	3%	2%	3%	2%	1%	2%
	NH White est.	39%	37%	25%	48%	74%	51%
	NH Black	2%	1%	3%	2%	1%	2%
Voter Turnout (Nov 2020)	Total	11,215	6,125	5,656	11,890	18,361	53,247
	Latino est.	59%	58%	71%	48%	22%	45%
	Spanish-Surnamed	54%	55%	65%	44%	20%	41%
	Asian-Surnamed	1%	2%	1%	2%	2%	2%
	Filipino-Surnamed	3%	2%	3%	2%	1%	2%
	NH White est.	39%	37%	25%	48%	74%	51%
	NH Black	2%	1%	3%	2%	1%	2%
Voter Turnout (Nov 2018)	Total	7,220	3,801	3,254	7,692	13,768	35,735
	Latino est.	47%	46%	63%	40%	17%	35%
	Spanish-Surnamed	44%	45%	59%	38%	16%	33%
	Asian-Surnamed	1%	2%	1%	2%	2%	1%
	Filipino-Surnamed	2%	2%	3%	2%	1%	2%
	NH White est.	49%	47%	31%	54%	79%	60%
NH Black est.	2%	2%	4%	2%	1%	2%	
Age	age0-19	31%	38%	38%	31%	24%	32%
	age20-60	51%	51%	53%	52%	51%	51%
	age60plus	18%	11%	9%	18%	25%	16%
Immigration	immigrants	32%	38%	41%	24%	10%	29%
	naturalized	33%	19%	18%	35%	54%	27%
Language spoken at home	english	38%	28%	20%	53%	80%	45%
	spanish	56%	69%	75%	42%	15%	51%
	asian-lang	5%	2%	3%	4%	3%	3%
	other lang	1%	1%	2%	1%	2%	1%
Language Fluency	Speaks Eng. "Less than Very Well"	28%	42%	45%	20%	6%	28%
Education (among those age 25+)	hs-grad	44%	36%	32%	48%	50%	43%
	bachelor	11%	7%	6%	14%	19%	12%
	graduatedegree	5%	3%	2%	6%	11%	6%
Child in Household	child-under18	46%	53%	60%	45%	31%	46%
Pct of Pop. Age 16+	employed	67%	66%	69%	67%	63%	66%
Household Income	income 0-25k	9%	21%	17%	11%	9%	13%
	income 25-50k	23%	26%	28%	20%	18%	22%
	income 50-75k	18%	22%	24%	18%	16%	19%
	income 75-200k	46%	30%	30%	47%	46%	41%
	income 200k-plus	5%	1%	2%	5%	11%	5%
Housing Stats	single family	93%	62%	51%	81%	90%	77%
	multi-family	7%	38%	49%	19%	10%	23%
	rented	29%	64%	68%	38%	24%	43%
	owned	71%	36%	32%	62%	76%	57%

Total population data from California's adjusted 2020 Census data. Citizen Voting Age Population, Age, Immigration, and other demographics from the 2015-2019 American Community Survey and Special Tabulation 5-year data. Turnout and Registration data from California Statewide Database ("Latino" figures calculated by NDC using Census Bureau's Latino undercount by surname estimate).

Santa Maria JUHSD Trustee Assignments by Draft Plan

Trustee Area	Green Plan	Orange Plan	Yellow Plan
1	Garvin	Garvin	<i>Vacant</i>
2	Karamitsos	Karamitsos	Karamitsos
3	Lopez	Lopez	Garvin & Lopez
4	Perez	Palera & Perez	Palera & Perez
5	Palera	<i>Vacant</i>	<i>Vacant</i>

Santa Maria JUHSD Election Sequence by Draft Plan

(There must be three trustee areas up in 2022 and two in 2024)

Trustee Area	Green Plan	Orange Plan	Yellow Plan
1	2024	2024	2022 or 2024
2	2022	2022	2022
3	2024	2024	2024
4	2022	2022	2022
5	2022	2022	2022 or 2024