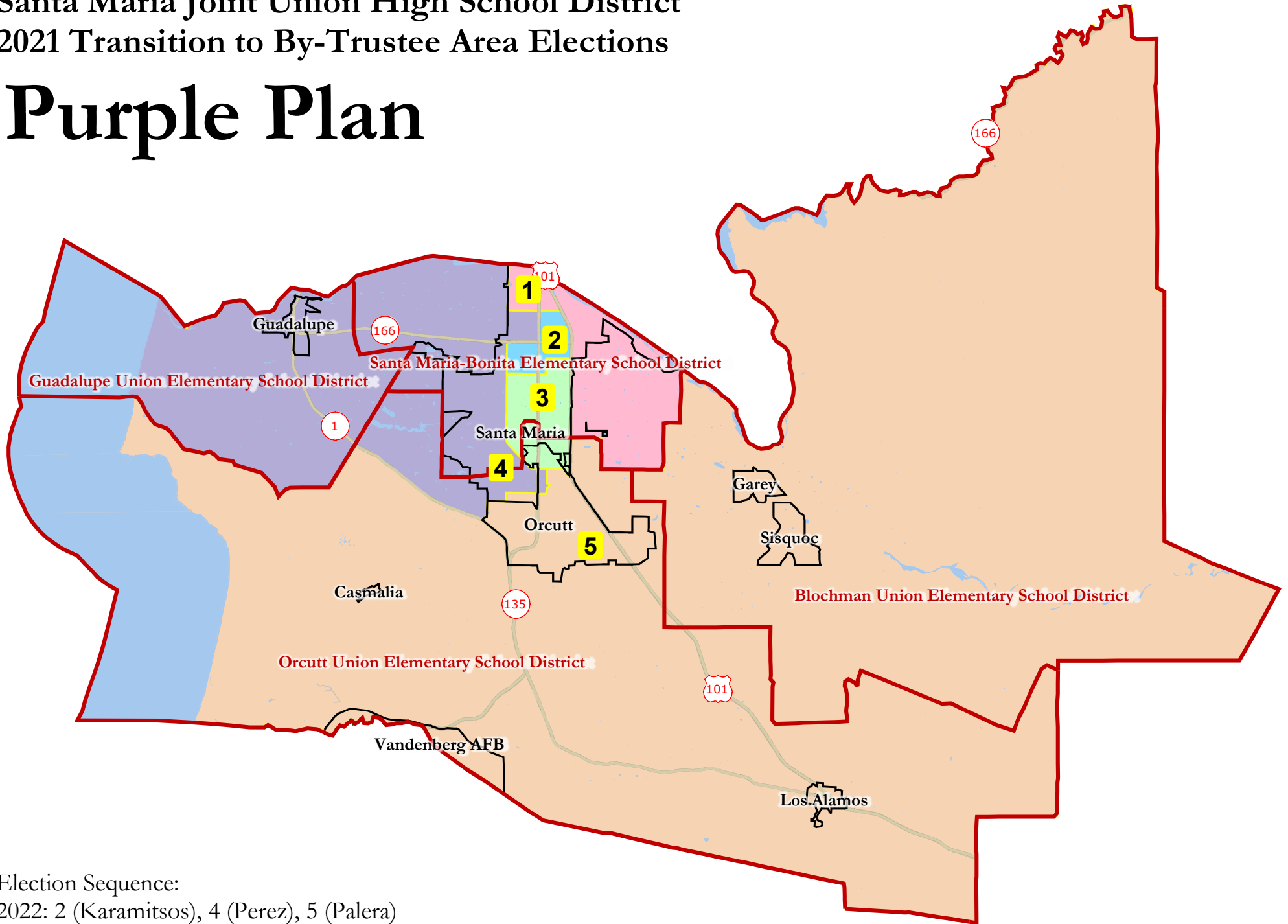


# Santa Maria Joint Union High School District 2021 Transition to By-Trustee Area Elections

## Purple Plan



Election Sequence:

2022: 2 (Karamitsos), 4 (Perez), 5 (Palera)

2024: 1 (Garvin), 3 (Lopez)

**Santa Maria Joint Union High School District - Purple Plan**

Category	Field	1	2	3	4	5	Total
2020 Census	Total Population	32,673	31,549	30,876	30,818	30,860	156,776
	Population Deviation	1,318	194	-479	-537	-495	1,855
	Pct. Deviation	4.20%	0.62%	-1.53%	-1.71%	-1.58%	5.92%
Total Pop.	Hispanic/Latino	74%	84%	63%	84%	33%	68%
	NH White	17%	11%	26%	9%	56%	24%
	NH Black	1%	1%	2%	1%	1%	1%
	NH Asian/Pac.Isl.	7%	3%	7%	5%	7%	6%
	NH Native Amer.	1%	1%	1%	1%	2%	1%
Citizen Voting Age Pop	Total	16,766	10,044	16,056	11,496	22,449	76,810
	Hisp	59%	60%	42%	73%	21%	47%
	NH White	30%	33%	46%	18%	70%	44%
	NH Black	2%	2%	2%	3%	2%	2%
	Asian/Pac.Isl.	8%	5%	10%	6%	7%	8%
	Native Amer.	0%	1%	1%	0%	2%	1%
Voter Registration (Nov 2020)	Total	14,713	7,743	13,281	10,662	20,520	66,919
	Latino est.	64%	64%	46%	75%	24%	50%
	Spanish-Surnamed	58%	60%	42%	70%	22%	46%
	Asian-Surnamed	1%	1%	2%	1%	2%	2%
	Filipino-Surnamed	3%	2%	3%	3%	1%	2%
	NH White est.	39%	37%	54%	23%	74%	51%
	NH Black	2%	2%	2%	3%	1%	2%
Voter Turnout (Nov 2020)	Total	11,215	5,611	10,737	7,714	17,970	53,247
	Latino est.	59%	58%	42%	72%	22%	45%
	Spanish-Surnamed	54%	55%	38%	66%	20%	41%
	Asian-Surnamed	1%	1%	2%	1%	2%	2%
	Filipino-Surnamed	3%	2%	3%	3%	1%	2%
	NH White est.	39%	37%	54%	23%	74%	51%
	NH Black	2%	2%	2%	3%	1%	2%
Voter Turnout (Nov 2018)	Total	7,220	3,442	7,297	4,377	13,399	35,735
	Latino est.	47%	46%	33%	67%	17%	35%
	Spanish-Surnamed	44%	45%	31%	63%	16%	33%
	Asian-Surnamed	1%	2%	2%	1%	2%	1%
	Filipino-Surnamed	2%	2%	2%	3%	1%	2%
	NH White est.	49%	47%	62%	27%	79%	60%
Age	age0-19	31%	40%	31%	36%	25%	32%
	age20-60	51%	51%	53%	52%	50%	51%
	age60plus	18%	9%	17%	12%	25%	16%
Immigration	immigrants	32%	39%	26%	38%	9%	29%
	naturalized	33%	15%	32%	24%	56%	27%
Language spoken at home	english	38%	24%	53%	26%	81%	45%
	spanish	56%	73%	40%	71%	15%	51%
	asian-lang	5%	1%	5%	3%	2%	3%
	other lang	1%	2%	2%	1%	2%	1%
Language Fluency	Speaks Eng. "Less than Very Well"	28%	45%	22%	38%	6%	28%
Education (among those age 25+)	hs-grad	44%	33%	47%	38%	48%	43%
	bachelor	11%	5%	15%	6%	19%	12%
	graduatedegree	5%	3%	6%	3%	11%	6%
Child in Household	child-under18	46%	56%	43%	57%	32%	46%
Pct of Pop. Age 16+	employed	67%	67%	66%	67%	64%	66%
Household Income	income 0-25k	9%	21%	13%	15%	8%	13%
	income 25-50k	23%	28%	22%	25%	16%	22%
	income 50-75k	18%	25%	19%	20%	16%	19%
	income 75-200k	46%	25%	43%	37%	48%	41%
	income 200k-plus	5%	1%	3%	3%	12%	5%
Housing Stats	single family	93%	50%	68%	78%	92%	77%
	multi-family	7%	50%	32%	22%	8%	23%
	rented	29%	73%	48%	46%	23%	43%
	owned	71%	27%	52%	54%	77%	57%

Total population data from California's adjusted 2020 Census data. Citizen Voting Age Population, Age, Immigration, and other demographics from the 2015-2019 American Community Survey and Special Tabulation 5-year data. Turnout and Registration data from California Statewide Database ("Latino" figures calculated by NDC using Census Bureau's Latino undercount by surname estimate).

### Santa Maria JUHSD Trustee Assignments by Draft Plan

Trustee Area	CAUSE Plan 1	CAUSE Plan 2	CAUSE Plan 3	Green Plan	Orange Plan	Yellow Plan	Purple Plan
1	<i>Vacant</i>	<i>Vacant</i>	<i>Vacant</i>	Garvin	Garvin	<i>Vacant</i>	Garvin
2	Kara-mitsos	Kara-mitsos	Kara-mitsos	Kara-mitsos	Kara-mitsos	Kara-mitsos	Kara-mitsos
3	Lopez	Lopez	Lopez	Lopez	Lopez	Garvin & Lopez	Lopez
4	Perez	Perez	Perez	Perez	Palera & Perez	Palera & Perez	Perez
5	Garvin & Palera	Garvin & Palera	Garvin & Palera	Palera	<i>Vacant</i>	<i>Vacant</i>	Palera

### Santa Maria JUHSD Election Sequence by Draft Plan

(There must be three trustee areas up in 2022 and two in 2024)

(The boxes with two years listed with a question mark are trustee areas with a trustee up in 2022 and another up in 2024)

Trustee Area	CAUSE Plan 1	CAUSE Plan 2	CAUSE Plan 3	Green Plan	Orange Plan	Yellow Plan	Purple Plan
1	2022 or 2024	2022 or 2024	2022 or 2024	2024	2024	2022 or 2024	2024
2	2022	2022	2022	2022	2022	2022	2022
3	2024	2024	2024	2024	2024	2024	2024
4	2022	2022	2022	2022	2022	2022	2022
5	2022 or 2024?	2022 or 2024?	2022 or 2024?	2022	2022	2022 or 2024	2022