

HONORS MUSIC THEORY

SUMMER 2017

For the start of the school year in September, it is imperative that you are well-versed with the following concepts:

- All major scales
- Both treble and bass clef pitches
- Enharmonic equivalents

The basis of all things that you will learn for the entire course is rooted in those fundamentals. Upon your return to school, you will be quizzed to check for understanding.

Here are a few tips to study and review!

Major Scales C – 0 sharps or flats G – F# D – F#, C# A – F#, C#, G# E – F#, C#, G#, D# B – F#, C#, G#, D#, A# F# - F#, C#, G#, D#, A#, E# C# - F#, C#, G#, D#, A#, E#, B#

F – Bb Bb – Bb, Eb Eb – Bb, Eb, Ab Ab – Bb, Eb, Ab, Db Db – Bb, Eb, Ab, Db, Gb Gb – Bb, Eb, Ab, Db, Gb, Cb Cb – Bb, Eb, Ab, Db, Gb, Cb, Fb

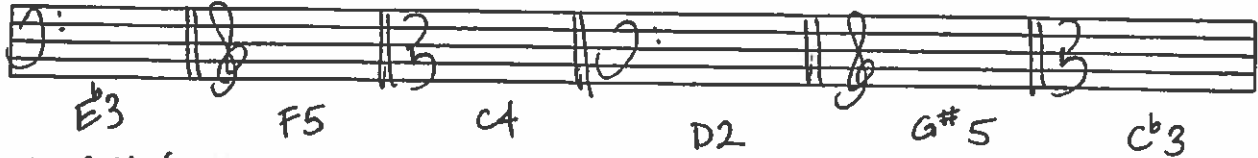
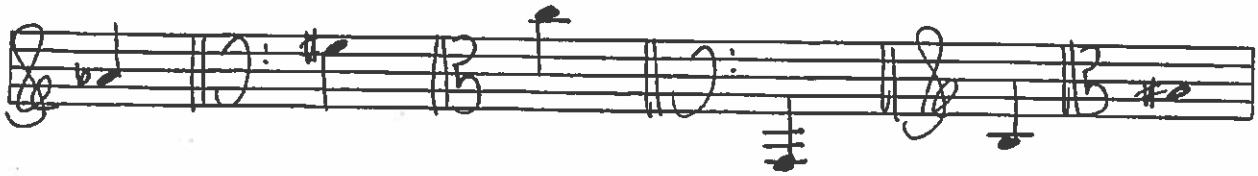
Treble Clef / Bass Clef Notes Treble Lines (bottom to top) : E – G – B – D – F
Treble Spaces (bottom to top) : F – A – C – E Bass Lines (bottom to top) : G – B – D – F – A
Bass Spaces (bottom to top) : A – C – E – G

Enharmonic Equivalents Cb = B, Db = C#, Eb = D#, Fb = E, Gb = F#, Ab = G#, Bb = A#, E# = F, B# = C

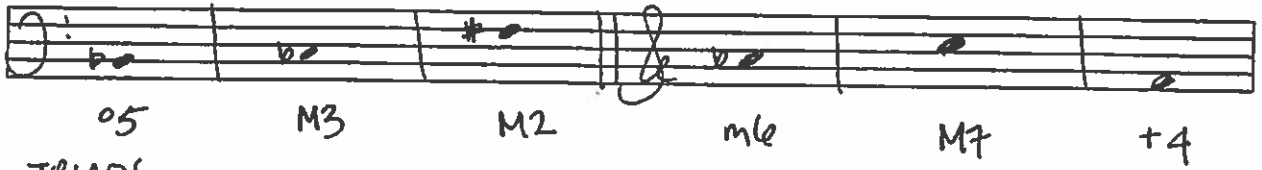
AP MUSIC THEORY - SUMMER REVIEW



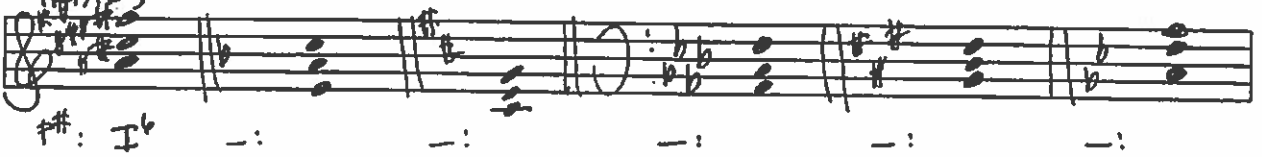
I. OCTAVE IDENTIFICATION



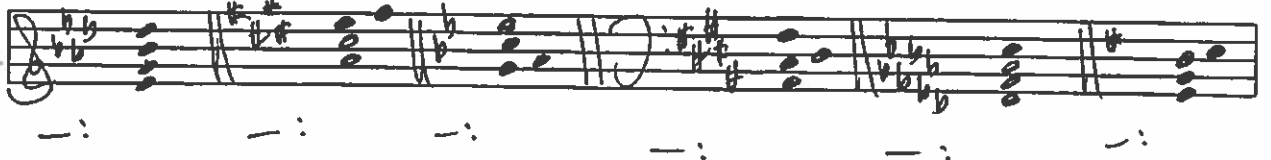
II. INTERVALS



III. TRIADS



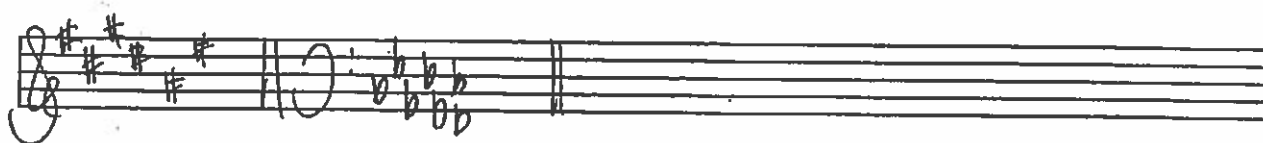
IV. SEVENTH CHORDS



HONORS THEORY PRACTICE



LABEL EACH KEY SIGNATURE :



LABEL EACH PITCH:



NOTATE THE ENHARMONIC EQUIVALENT FOR EACH GIVEN PITCH:



A# =

Fb =

F# =

Gb =

Db =

Ab =