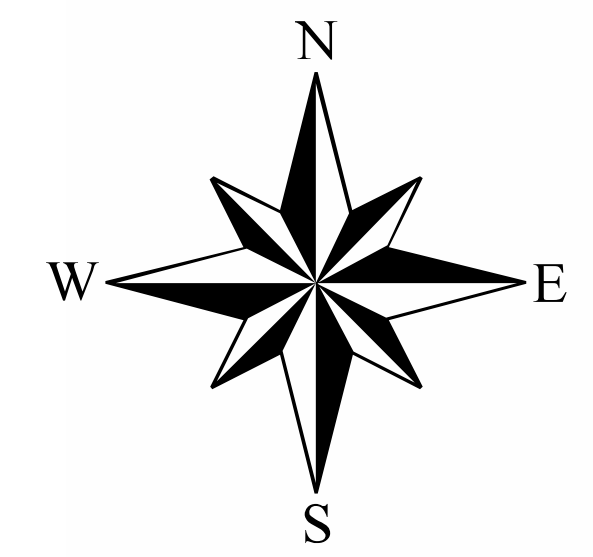


# Washington County 2020 Adopted Future Land Use Map

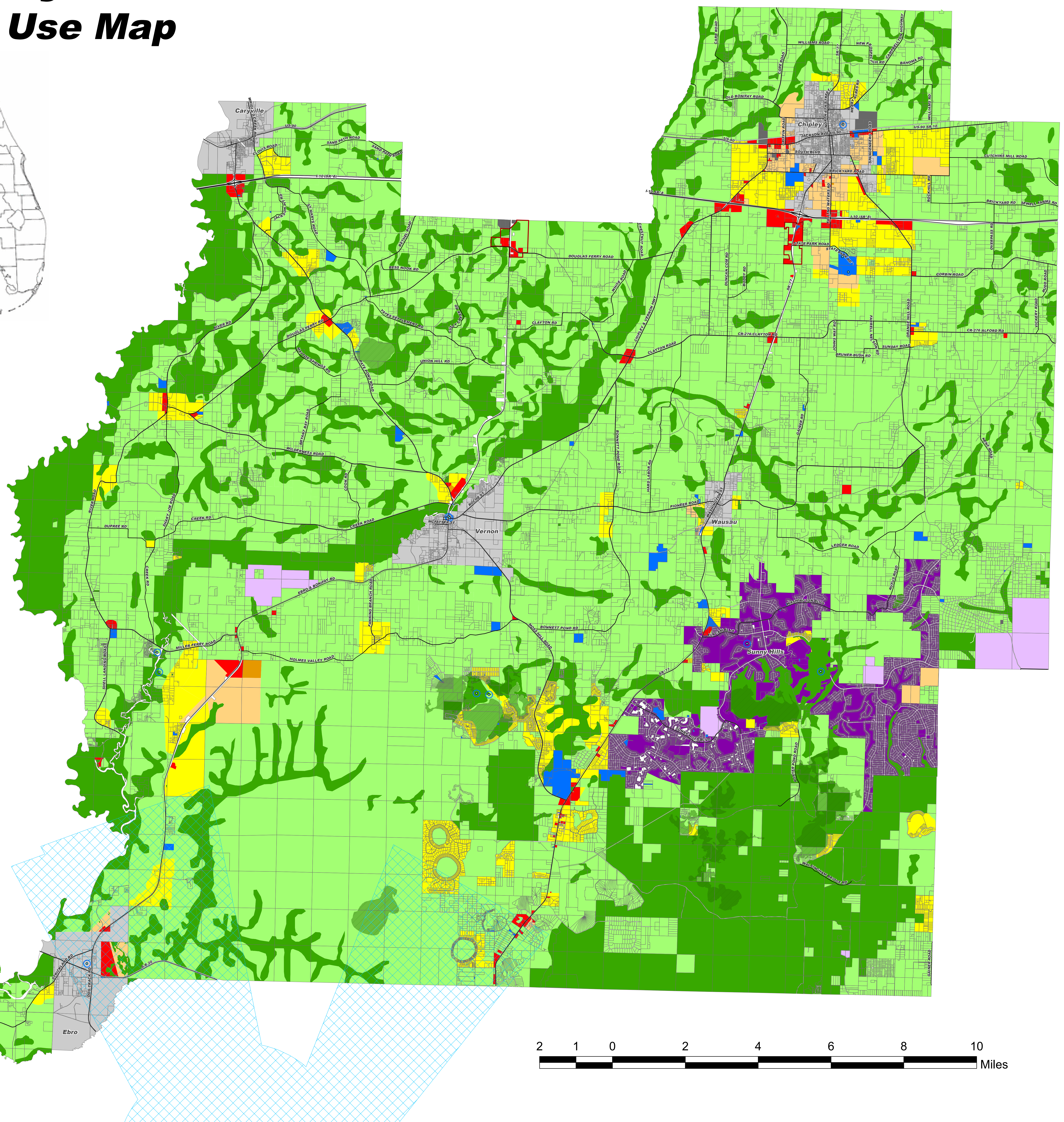


**Legend**

- Water Well
- Water Well Buffer (500 ft)
- Commercial Intent Overlay
- Parcels
- Air Installation Compatibility Use Zone (AICUZ)
- Conservation (Lakes)

**Future Land Use**

- Conservation
- Agricultural/Silvicultural
- Recreation
- Public/Semi-Public
- Low Density Residential
- Low/Medium Density Residential
- High/Medium Density Residential
- Industrial
- Neighborhood Commercial I
- Neighborhood Commercial II
- General Commercial
- Planned Unit Development
- Sunny Hills Mixed Use
- Municipalities



Map Prepared By  
The West Florida Regional Planning Council  
January 28, 2019

Last Amended January 24, 2019  
by Ordinance #2019-3

Map is accurate for planning purposes only.

