

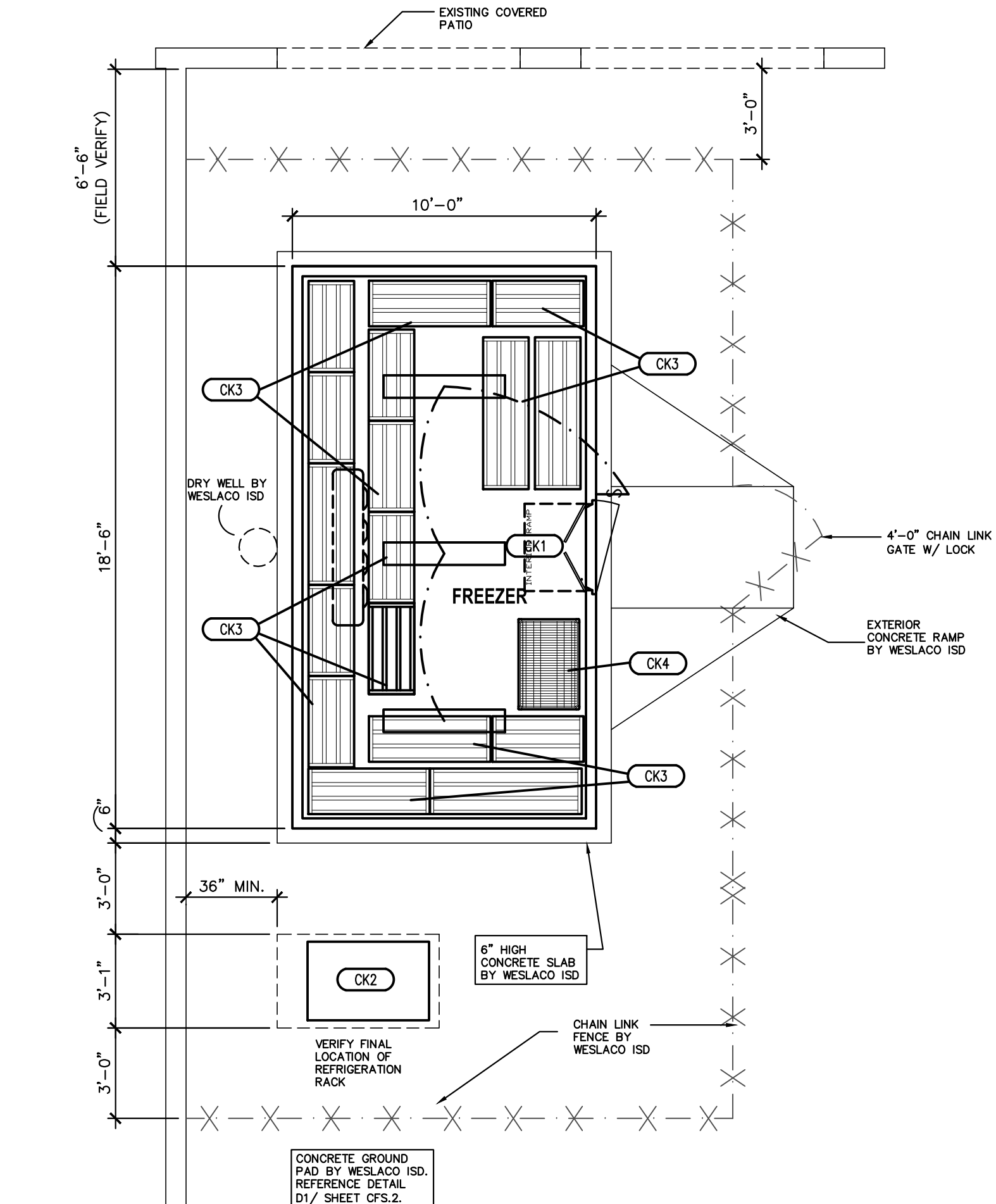


DEMOLITION AND CONSTRUCTION NOTES

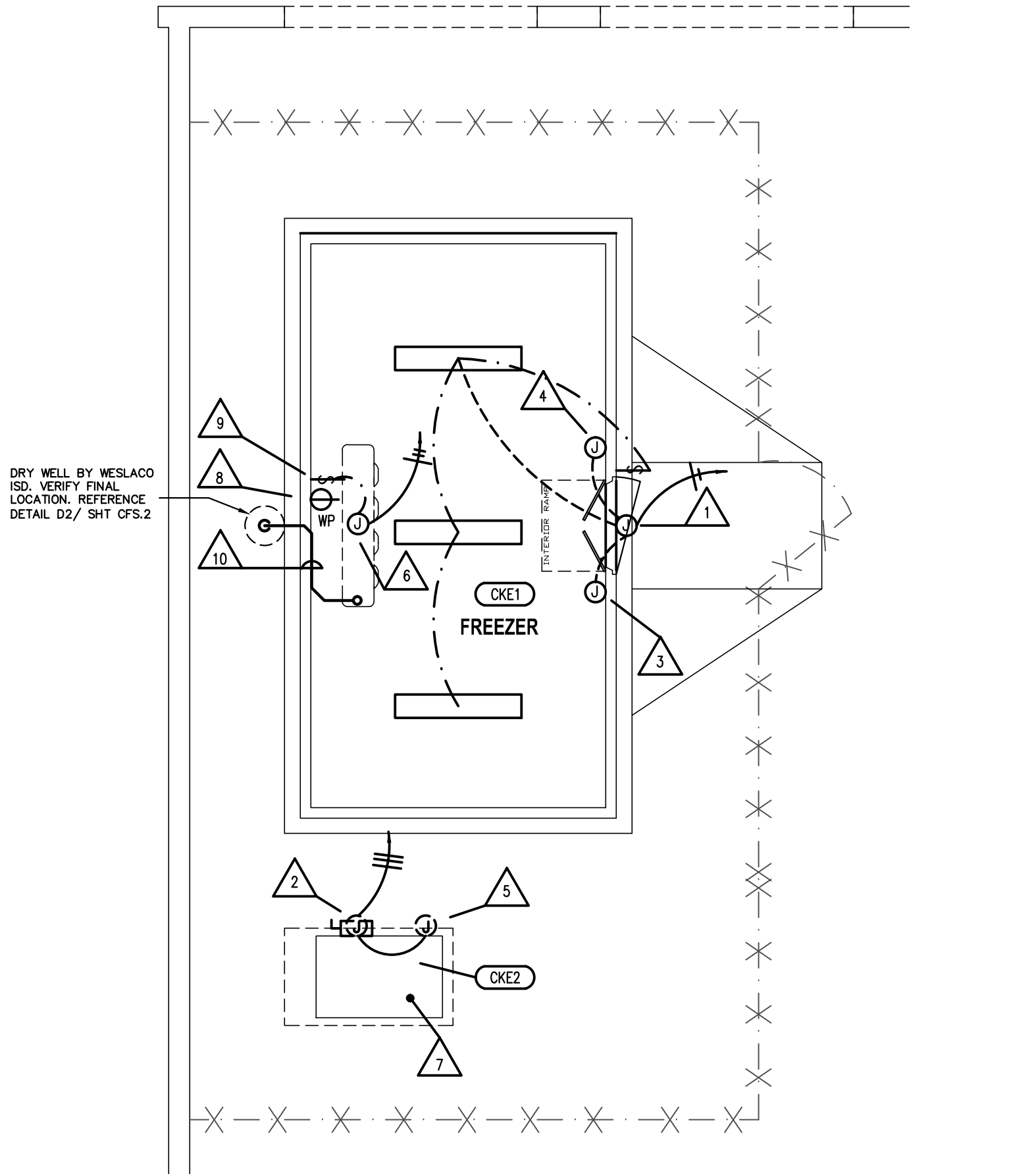
- 1 IT IS RECOMMENDED THAT ALL CONTRACTORS ARE TO SURVEY EXISTING WALK-IN COOLER AND FREEZER ASSEMBLY CONDITIONS BEFORE ISSUING THEIR BIDS.
- 2 KITCHEN EQUIPMENT CONTRACTOR IS TO CAREFULLY REMOVE ALL EXISTING WALK-IN AND FREEZER ASSEMBLY IN A MANNER TO PREVENT EXTENSIVE DAMAGE TO THE EXISTING PANELS AND BUILDING FINISHES. ALL UTILITY CONNECTIONS ARE TO BE DISCONNECTED AS REQUIRED BY LICENSED TRADES FOR THE DISASSEMBLING OF THE UNIT.
- 3 WESLACO ISD IS TO PROPERLY SANITIZE AND DISINFECT BUILDING WALLS, CEILINGS AND FLOORS SURROUNDING THE EXISTING WALK-IN COOLER/FREEZER ASSEMBLY TO REMOVE ANY MOLD AND MILDEW CAUSED FROM THE EXISTING CONDITIONS.
- 4 KITCHEN EQUIPMENT CONTRACTOR IS TO REMOVE AND DISPOSE OF ALL CONSTRUCTION DEBRIS AND MATERIALS STORED ON SITE AT THE COMPLETION OF JOB. A CONSTRUCTION DUMPSTER SHALL BE PROVIDED BY THE CONTRACTOR FOR ALL CONSTRUCTION DEBRIS AND WASTES ASSOCIATED WITH THIS PROJECT.
- 5 WESLACO ISD IS TO REPAIR, PAINT AND CLEAN ANY DAMAGES TO BUILDING INTERIOR AND EXTERIOR FINISHES CAUSED BY THE DISASSEMBLY AND REINSTALLATION OF THE WALK-IN COOLER AND FREEZER ASSEMBLIES.
- 6 WESLACO ISD IS TO FLOAT AND RESURFACE EXISTING SLAB SO THAT THE FLOOR SURFACE UNDER NEW WALK-IN ASSEMBLIES ARE PERFECTLY LEVEL WITH KITCHEN FINISHED FLOOR AND ALL EXPOSED THERMAL BREAKER MEMBERS IN SLAB ARE REMOVED AND INFILLED WITH CONCRETE. REMOVE EXISTING QUARRY TILES AS REQUIRED.
- 7 KITCHEN EQUIPMENT CONTRACTOR IS TO STOCKPILE EXISTING WALK-IN ASSEMBLY COMPONENTS INCLUDING REFRIGERATION SYSTEMS FOR OWNER TO SURVEY AND SALVAGE AT THEIR DISCRETION. ALL UNWANTED COMPONENTS ARE TO BE PROPERLY DISPOSED OF BY KITCHEN EQUIPMENT CONTRACTOR.
- 8 WESLACO ISD IS TO REMOVE EXISTING SUSPENDED CEILING GRID TO NEAREST MAIN GRID AROUND PERIMETER OF WALK-IN ASSEMBLY PRIOR TO DISASSEMBLING EXISTING UNITS.
- 9 WESLACO ISD IS TO REMOVE EXISTING GYPSUM BOARD FURR DOWN ABOVE WALK-IN ASSEMBLIES REPAIR OR REPLACE SUSPENDED CEILING IN THIS AREA AS REQUIRED. WALK-IN COOLER/FREEZER ASSEMBLIES SHALL INCLUDE STAINLESS STEEL ENCLOSURES TO CEILING AND WALLS AS REQUIRED.
- 10 WESLACO ISD IS TO REINSTALL NEW CEILING GRID AND T'S AROUND PERIMETER OF NEW WALK-IN ASSEMBLY AS REQUIRED. PROVIDE AND INSTALL NEW VINYL FACED GYPSUM BOARD CEILING TILES TO MATCH EXISTING AROUND PERIMETER OF WALK-IN ASSEMBLY WHERE REMOVED OR DAMAGED.
- 11 WHERE APPLICABLE FIRE SPRINKLER NOZZLES ON INTERIOR OF WALK-INS ARE TO BE MODIFIED AND RELOCATED AS REQUIRED BY WESLACO ISD LICENSED TRADES TO ACCOMMODATE NEW WALK-IN ASSEMBLIES.

ELECTRICAL/PLUMBING ROUGH-IN NOTES

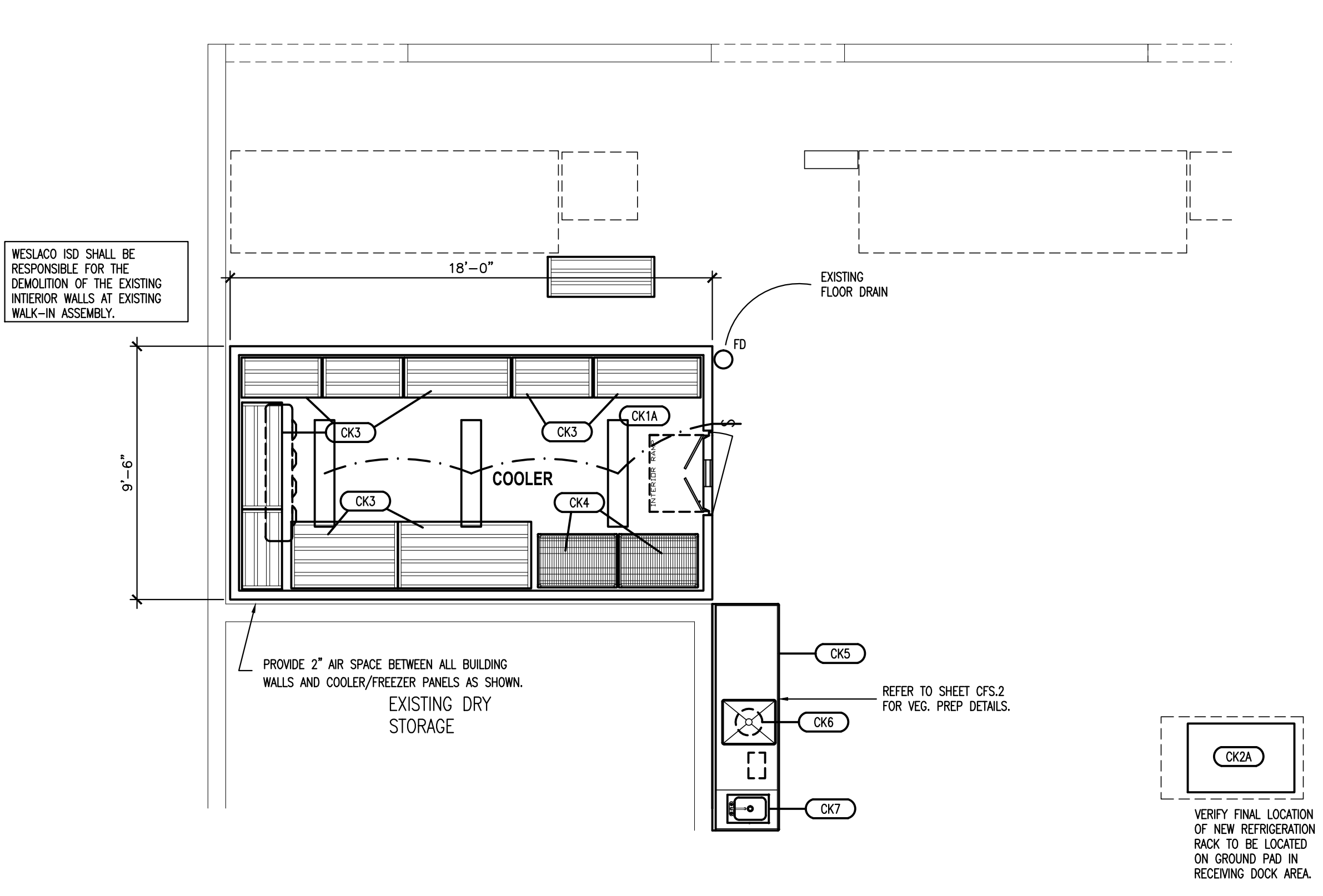
- 1 DOOR HEATERS, LIGHTS AND PRESSURE RELIEF PORTS PRE-WIRED TO JUNCTION BOX AT FRONT OF COLD STORAGE ASSEMBLY BY COOLER MANUFACTURER. FINAL CONNECTION BY KITCHEN EQUIPMENT CONTRACTOR'S (K.E.C.) ELECTRICIAN. REFER TO NOTE 3 BELOW.
- 2 MAIN FUSED ELECTRICAL DISCONNECT SWITCH IS TO BE PROVIDED AND PRE-MOUNTED ON THE UNIT BY THE REFRIGERATION SYSTEM MANUFACTURER. WESLACO ISD ELECTRICIAN IS TO PROVIDE AND INSTALL ANY ADDITIONAL ELECTRICAL DISCONNECT SWITCHES AND CIRCUITING FROM THE BUILDING POWER SUPPLY TO THE LOCATION OF THE NEW WALK-IN ASSEMBLY AS REQUIRED. FINAL ELECTRICAL CONNECTIONS TO THE REFRIGERATION SYSTEMS ARE TO BE PROVIDED BY A LICENSED ELECTRICIAN AS CONTRACTED BY THE KITCHEN EQUIPMENT CONTRACTOR.
- 3 WESLACO I.S.D. ELECTRICIAN IS TO PROVIDE CIRCUITING FOR 120V/60HZ/1PH/17 AMP DOOR HEATER, LIGHTS AND PRESSURE RELIEF VENT FROM BUILDING POWER SUPPLY TO NEW WALK-IN FREEZER. CIRCUIT IS TO TERMINATE AT J-BOX LOCATED ON EXTERIOR OF WALK-IN FREEZER. ALL FINAL CONNECTIONS ON INTERIOR OF WALK-IN ASSEMBLY AND REQUIRED PANEL PENETRATIONS ARE TO BE PROVIDED AND INSTALLED BY K.E.C.'S ELECTRICIAN. ALL PENETRATIONS AND INTERIOR OF CONDUITS ARE TO BE PROPERLY SEALED.
- 4 WESLACO I.S.D. ELECTRICIAN IS TO PROVIDE CIRCUITING FOR 120V/60HZ/1PH/12 AMP DOOR HEATER AND LIGHTS FROM BUILDING POWER SUPPLY TO NEW WALK-IN COOLER. CIRCUIT IS TO TERMINATE AT J-BOX LOCATED ON TOP OF THE WALK-IN. ALL FINAL CONNECTIONS ON INTERIOR OF WALK-IN ASSEMBLY AND REQUIRED PANEL PENETRATIONS ARE TO BE PROVIDED AND INSTALLED BY K.E.C.'S SUPPLIED ELECTRICIAN. ALL PENETRATIONS AND INTERIOR OF CONDUITS ARE TO BE PROPERLY SEALED.
- 5 CONTROL PANEL FOR REFRIGERATION RACK SYSTEM SUPPLIED BY KITCHEN EQUIPMENT CONTRACTOR. WESLACO I.S.D. IS TO PROVIDE 208V/60HZ/3PH 18.9 AMP TOTAL CONNECTED LOAD CIRCUIT FROM BUILDING POWER SUPPLY TO THE CONDENSING UNIT. WESLACO I.S.D. IS TO COORDINATE WITH KITCHEN EQUIPMENT CONTRACTOR FOR ALL REQUIREMENTS AND FINAL LOCATIONS. FINAL ELECTRICAL CONNECTION TO THE REFRIGERATION RACK IS TO BE PROVIDED BY THE K.E.C.'S LICENSED ELECTRICIAN. REFERENCE SHEET CFS.2 FOR REFRIGERATION RACK DETAILS.
- 6 WESLACO I.S.D. IS TO PROVIDE AND INSTALL A DEDICATED CIRCUIT FROM THE BUILDING POWER SUPPLY TO THE LOCATION OF THE NEW FREEZER EVAPORATOR COIL AND DEFOST HEATER. CIRCUIT IS TO INCLUDE POWER OF 208V/1PH/13.2 EVAPORATOR COIL AND DEFOST HEATER. CIRCUITING IS NOT INCLUDED IN CONTROL PANEL LISTED IN NOTE 5. PANEL PENETRATION IN THE WALK-IN ASSEMBLY AND FINAL ELECTRICAL CONNECTION TO THE EVAPORATOR COIL ARE TO BE PROVIDED BY THE K.E.C.'S LICENSED ELECTRICIAN.
- 7 WESLACO ISD CONSTRUCTION DEPARTMENT TO VERIFY FINAL LOCATION AND INSTALL 6" HIGH RAISED CONCRETE PAD FOR REFRIGERATION RACK. VERIFY AND PROVIDE ALL CLEARANCES PER THE SUBMITTED MANUFACTURER'S REQUIREMENTS.
- 8 K.E.C.'S LICENSED ELECTRICIAN IS TO PROVIDE AND INSTALL WEATHER PROOF SINGLEPLEX ELECTRICAL RECEPTACLE ON INTERIOR OF THE WALK-IN FREEZER AND LOCATE BEHIND THE EVAPORATOR COIL FOR CONDENSATE DRAIN HEAT WRAP. WESLACO ISD IS TO PROVIDE DEDICATED 120V/1PH/20 AMP CIRCUIT FROM THE BUILDING POWER TO THE RECEPTACLE LOCATION.
- 9 K.E.C.'S LICENSED ELECTRICIAN IS TO PROVIDE AND INSTALL WEATHER PROOF SWITCH ON INTERIOR OF THE WALK-IN ASSEMBLY AND LOCATED BEHIND THE EVAPORATOR COIL FOR MEANS OF ELECTRICAL DISCONNECT TO THE EVAPORATOR.
- 10 K.E.C.'S PLUMBING CONTRACTOR IS TO PROVIDE AND INSTALL 1" INSULATED COPPER CONDENSATE DRAIN LINE COMPLETE WITH P-TRAP FROM EVAPORATOR COIL TO THE DRY WELL ON THE EXTERIOR OF THE WALK-IN ASSEMBLY. ENTIRE CONDENSATE DRAIN LINE IS TO BE PROPERLY INSULATED WITH APPROVED ARMAFLEX INSULATION.
- 11 KITCHEN EQUIPMENT CONTRACTOR SHALL PROVIDE A LICENSED ELECTRICIAN FOR ALL FINAL ELECTRICAL CONNECTIONS ON INTERIOR OF WALK-IN ASSEMBLIES. ALL PANEL PENETRATION AND SEALING OF CONDUITS AND PENETRATIONS IS TO BE PROVIDED BY THE KITCHEN EQUIPMENT CONTRACTOR (K.E.C.). ALL CIRCUITING RUNS FROM THE BUILDING TO THE WALK-IN ASSEMBLY LOCATION ARE TO BE PROVIDED AND INSTALLED BY LICENSED TRADES AS SUPPLIED BY THE WESLACO INDEPENDENT SCHOOL DISTRICT (OWNER).
- 12 DOOR HEATERS AND LIGHTS PRE-WIRED TO JUNCTION BOX AT TOP OF THE WALK-IN COOLER ASSEMBLY BY COOLER MANUFACTURER. FINAL CONNECTION BY K.E.C.'S CONTRACTED ELECTRICIAN. REFER TO NOTE 4 ABOVE.
- 13 CONTROL PANEL FOR REFRIGERATION RACK SYSTEM SUPPLIED BY KITCHEN EQUIPMENT CONTRACTOR. WESLACO I.S.D. IS TO PROVIDE 208V/60HZ/3PH 13.2 AMP TOTAL CONNECTED LOAD CIRCUIT FROM BUILDING POWER SUPPLY TO THE CONDENSING UNIT. WESLACO I.S.D. IS TO COORDINATE WITH KITCHEN EQUIPMENT CONTRACTOR FOR ALL REQUIREMENTS AND FINAL LOCATIONS. FINAL ELECTRICAL CONNECTION TO THE REFRIGERATION RACK IS TO BE PROVIDED BY THE K.E.C.'S LICENSED ELECTRICIAN. REFERENCE SHEET CFS.2 FOR REFRIGERATION RACK DETAILS.
- 14 WESLACO I.S.D. IS TO PROVIDE AND INSTALL A DEDICATED CIRCUIT FROM THE BUILDING POWER SUPPLY TO THE LOCATION OF THE 120V/60HZ/1PH 1.8 AMP COOLER EVAPORATOR COIL. CIRCUIT IS NOT INCLUDED IN CONTROL PANEL LISTED IN NOTE 13. PANEL PENETRATION IN THE WALK-IN ASSEMBLY AND FINAL ELECTRICAL CONNECTION TO THE EVAPORATOR COIL ARE TO BE PROVIDED BY THE K.E.C.'S LICENSED ELECTRICIAN.
- 15 K.E.C.'S PLUMBING CONTRACTOR IS TO PROVIDE AND INSTALL 1" INSULATED COPPER CONDENSATE DRAIN LINE COMPLETE WITH P-TRAP FROM EVAPORATOR COIL AND ROUTED TO THE EXISTING FLOOR DRAIN. ENTIRE CONDENSATE DRAIN LINE IS TO BE PROPERLY INSULATED WITH APPROVED ARMAFLEX INSULATION.
- 16 WESLACO I.S.D. IS TO PROVIDE PROVIDE ELECTRICAL CIRCUITING FROM BUILDING POWER SUPPLY TO THE LOCATION OF THE 208V/3PH 3.2 AMP DISPOSAL. STUB-OUT OF WALL TO BE 18" AFF. FINAL ELECTRICAL CONNECTIONS TO THE DISPOSAL ARE TO BE PROVIDED BY THE K.E.C.'S ELECTRICIAN.
- 17 WESLACO I.S.D. IS TO PROVIDE AND INSTALL ALL REQUIRED PLUMBING CONNECTIONS FOR ITEMS CK5, CK6 AND CK7 AS SCHEDULED IN KITCHEN EQUIPMENT LISTING.
- 18 KITCHEN EQUIPMENT CONTRACTOR SHALL PROVIDE A LICENSED ELECTRICIAN FOR ALL FINAL ELECTRICAL AND CONTROL WIRING CONNECTIONS TO THE REFRIGERATION RACK CONDENSING UNITS FROM THE CIRCUIT PROVIDED BY WESLACO I.S.D. THAT IS TO BE LOCATED WITHIN 12" FROM THE REFRIGERATION RACK LOCATIONS.



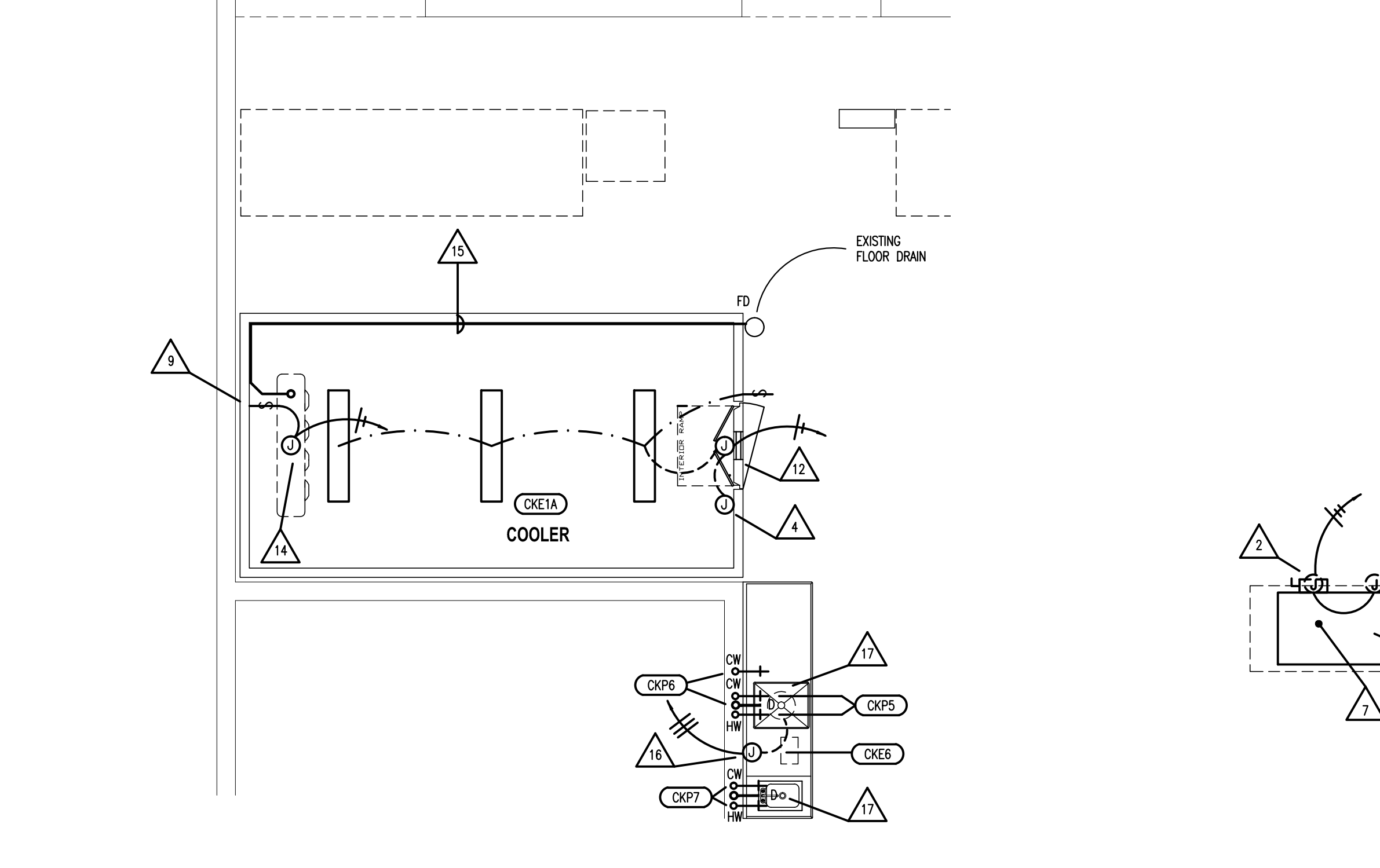
A WALK-IN FREEZER FLOOR PLAN
SCALE: 1/4"=1'-0"



C WALK-IN FREEZER ELECTRICAL AND PLUMBING ROUGH-IN
SCALE: 1/4"=1'-0"



B WALK-IN COOLER FLOOR PLAN
SCALE: 1/4"=1'-0"



D WALK-IN COOLER ELECTRICAL AND PLUMBING ROUGH-IN
SCALE: 1/4"=1'-0"

NOTE: WESLACO I.S.D. IS TO PROVIDE AND INSTALL ALL REQUIRED ELECTRICAL CIRCUITING TO THE LOCATION OF THE NEW WALK-IN ASSEMBLY AND WITHIN A MAXIMUM OF 6 FEET FROM THE TERMINATION POINTS AND/OR FINAL CONNECTIONS ON THE EQUIPMENT. THE DRY WELL REQUIRED FOR CONDENSATE DRAINAGE IS TO BE PROVIDED AND INSTALLED BY THE WESLACO I.S.D.

ALL FINAL PLUMBING AND ELECTRICAL CONNECTIONS TO THE EQUIPMENT ARE TO BE PROVIDED BY A LICENSED ELECTRICIAN AND PLUMBER AS CONTRACTED BY THE KITCHEN EQUIPMENT CONTRACTOR (K.E.C.).

KITCHEN EQUIPMENT LISTING

ITEM	QUANTITY	DESCRIPTION	EQUIPMENT SPECIFICATIONS				ELECTRICAL DATA												REMARKS	PLUMBING/GAS/STEAM CONNECTIONS						ROUGH-IN LOCATION															
			MANUFACTURER	DIMENSIONS			ITEM	SPECIFICATIONS			POWER REQ'D.			ROUGH-IN LOCATION			CONNECTIONS	CW		HW	D	H.D.	FS	GAS	CFH	STEAM	P.S.I.	WATER	DRAIN												
				W.	D.	H.		AMPS	WATT	KW	CFM	HP	VOLT	CYC.	PH.	A.F.F.														IN WALL	STUB UP										
CK1	1	WALK-IN FREEZER	THERMO KOOL	222"	112"	110"	A	17	-	-	-	-	120	60	1	VERIFY WITH MANUFACTURER	-	Y	-	Y	-	Y	-	Y	-	DOOR HEATER/LIGHTS TO BE CIRCUITED TO SINGLE POINT CONNECTION BRANCH DRAIN TO NEAREST FLOOR SINK	-	-	1"	-	-	-	-	-	-	-	-	-	BTC		
CK1A	1	WALK-IN COOLER	THERMO KOOL	114"	216"	110"	1	12	-	-	-	-	120	60	1	ABOVE CEILING	-	Y	-	Y	-	Y	-	Y	-	DOOR HEATER/LIGHTS/PRESSURE RELIEF PORT TO BE CIRCUITED TO SINGLE POINT CONNECTION	-	-	1"	-	-	-	-	-	-	-	-	-	BTC		
CK2	1	REFRIGERATION RACK - FREEZER	RDT	33"	43"	35"	2	18.9	-	-	-	-	208	60	3	24"	Y	-	Y	-	Y	-	Y	-	Y	PROVIDE 120V/1PH/1.8 AMP DEDICATED CIRCUIT FOR CLR EVAP COIL EVAPORATOR COILS/GROUND PAD BY GENERAL CONTRACTOR	-	-	1"	-	-	-	-	-	-	-	-	-	-		
CK2A	1	REFRIGERATION RACK - COOLER	RDT	33"	43"	35"	A	13.2	-	-	-	-	208	60	1	24"	Y	-	Y	-	Y	-	Y	-	Y	PROVIDE 208V/1PH/13.2 AMP CIRCUITS FOR FRZ AND TAN MOTOR EVAPORATOR COILS/GROUND PAD BY GENERAL CONTRACTOR	-	-	1"	-	-	-	-	-	-	-	-	-	-		
CK3	LT	DUNNAGE RACK	NEW AGE	AS PER PLANS			3	-	-	-	-	-	-	-	-	24"	-	-	-	-	-	-	-	-	-	FIELD MEASURE PRIOR TO ORDERING	-	-	-	-	-	-	-	-	-	-	-	-	-		
CK4	LT	SHELVING UNIT	INTERMETRO INDUSTRIES - METRO MAX	AS PER PLANS			4	-	-	-	-	-	-	-	-	-	-	-	-	-	-	-	-	-	-	FOUR TIERS / FIELD MEASURE PRIOR TO ORDERING	-	-	-	-	-	-	-	-	-	-	-	-	-		
CK5	1	VEG PREP	CUSTOM FABRICATE	AS PER PLANS			5	-	-	-	-	-	-	-	-	-	-	-	-	-	-	-	-	-	-	PRE-RINSE ASSEMBLY/ DRAINER ASSEMBLY/ DISPOSER PROVISIONS W/ ADD A FAUCET	1/2"	1/2"	2"	-	12"	-	-	-	-	-	-	-	-	12"	BTC
CK6	1	DISPOSER	SALVAJOUR	15"	15"	17"	6	6.2	-	-	-	-	208	60	3	18"	Y	-	-	Y	-	-	-	-	-	ARSS CONTROL PANEL/6-1/2" SINK MOUNT/DEJAMMING WRNECH SINK MOUNTED/AS-101 CONTROL PANEL/VACUUM BREAKER	1/2"	-	2"	-	-	-	-	-	-	-	-	-	12"	10"	
CK7	1	DROP-IN SINK	ADVANCE TABCO	19"	13"	11"	7	-	-	-	-	-	-	-	-	-	-	-	-	-	-	-	-	-	-	DECK MOUNT FAUCET B-110/ S.S. 6" REAR & SIDE SPLASH DIVIDER	1/2"	1/2"	2"	-	-	-	-	-	-	-	-	-	12"	24"	

NOTE: BTC DENOTES BRANCH INDIRECT DRAIN LINE TO NEAREST CONNECTION. (DRY WELL, FLOOR SINK, FLOOR DRAIN ETC.)