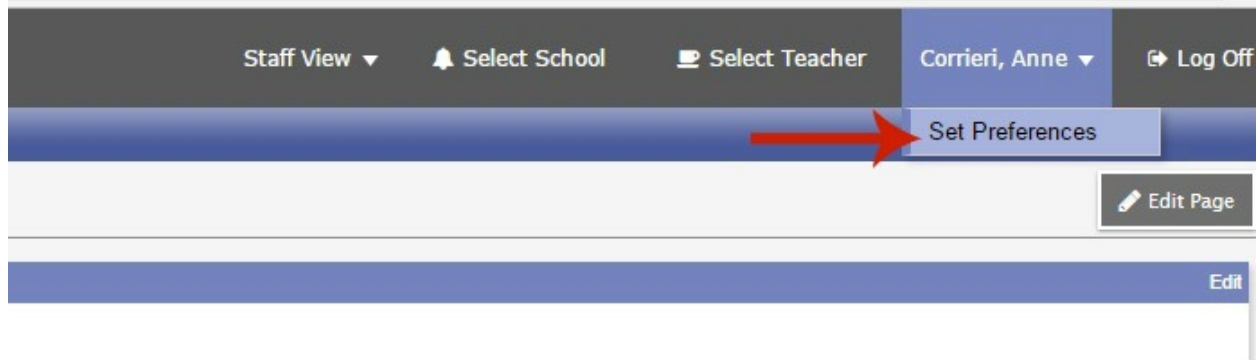
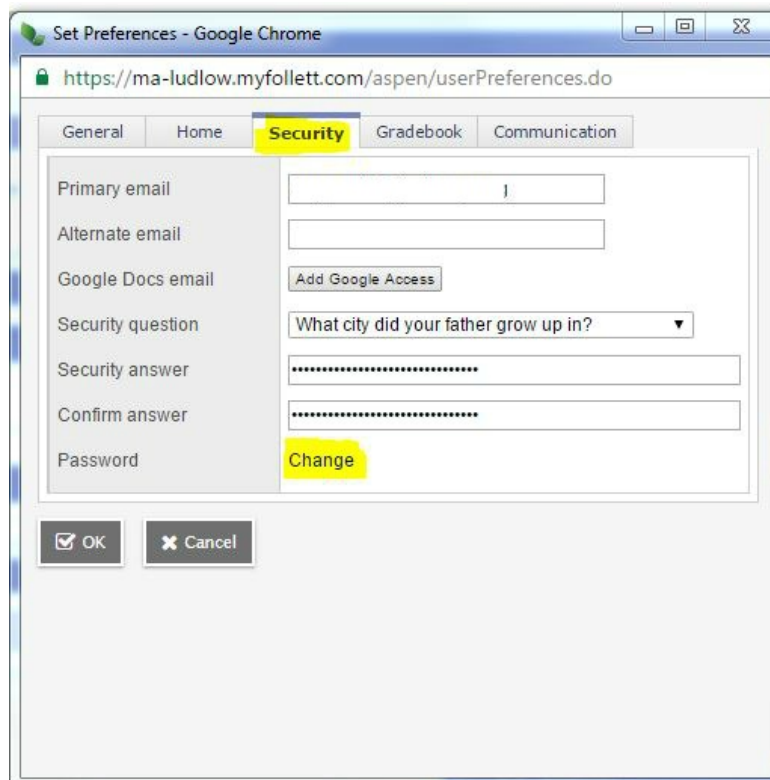


# How to Change your Aspen Password

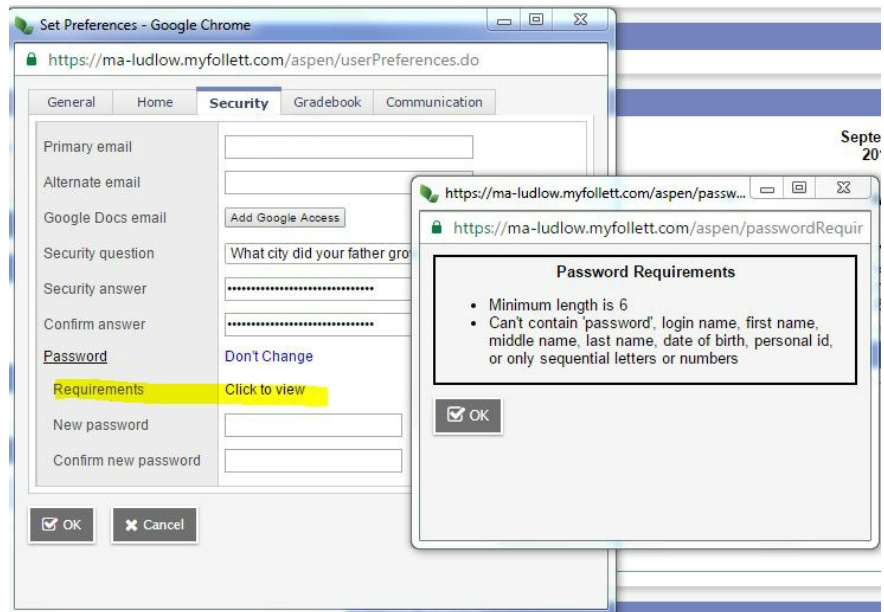
After logging into your Aspen Account click on the **Dropdown Arrow** by your name in the upper right corner of the screen and click on **Set Preferences**. A new screen will appear.



Click on the **Security tab**. Check to note that your primary email information is correct and select **Password > Change**.



If you are unsure of the password requirements you can click on **Requirements**>**Click to view** and a screen will pop up with that information.



Type in your **New Password** and then again in **Confirm new password** and click OK.

