



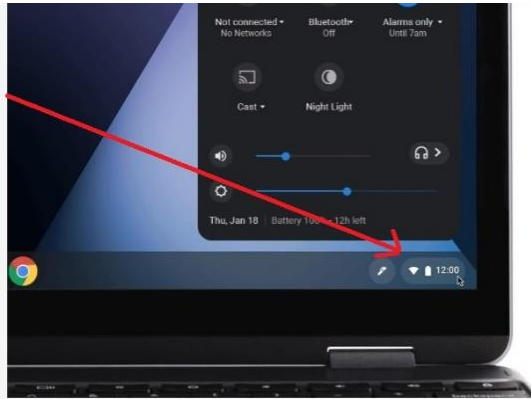
WASD LOANER CHROMEBOOK QUICK REFERENCE GUIDE

After opening the lid of the Chromebook, it will automatically boot to a Google login page and the @wyomingarea.org will already be filled in. Students can enter their username and password to login. If you cannot remember your username or login password, please email techsupport@wyomingarea.org and the default password for the 2020-2021 school year is... **warriors2021**

Please review the following instructions to connect your Chromebook to an available wireless network.

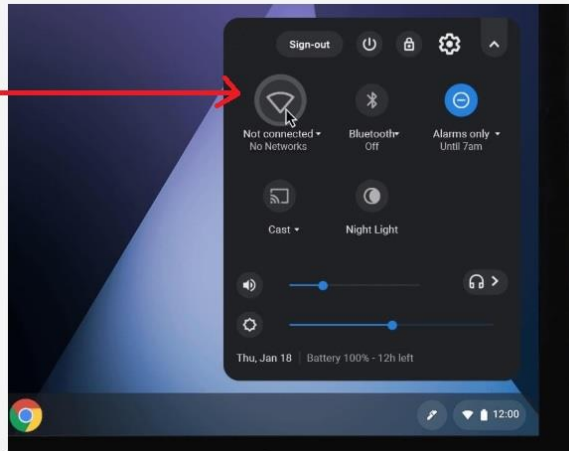
Step 1

Click on the Quick Settings Panel at the bottom right of your screen.



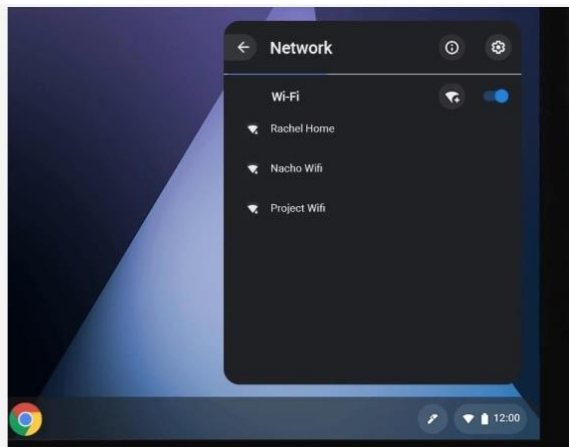
Step 2

Click on "no-network."



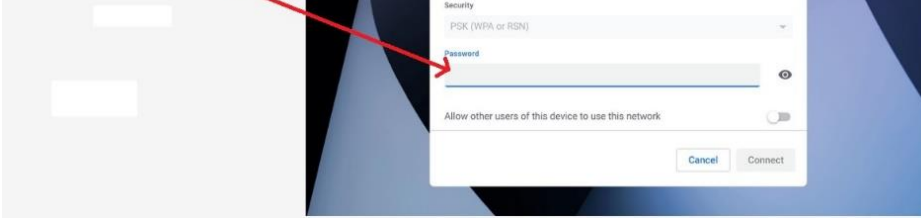
Step 3

Select your Wifi Network



Step 4

Pick one and enter the password if it calls for one.



WASD PARENT PORTAL INSTRUCTIONS

For those parents who don't have a portal account, please use the following instructions to setup an account.

1. Access the Wyoming Area website at <http://www.wyomingarea.org>
2. Click the PARENTS link, then click the **CSIU PARENT PORTAL NEW REGISTRATION** link. The direct login link is also available at <https://parents.csiu-technology.org/Register.aspx>
3. Please fill out the following form on the registration website. You will need one of your student(s) ID in order to proceed and link your account with a district student.

Welcome to Parent Portal Registration!

Account information Personal Information Student Information

STEP 1: Please enter your parent portal logon information below.

* School District
(Start typing your school district then select your district in the list)

* Username
(Your ID is what you will use to login to the portal. You can change at any time from within the portal.)

* Email Address
(Your email address can be updated at anytime from within the portal.
If you forget your password the account reset information will be sent to this account)

* Confirm Email Address

* Password
(Should be a minimum of 6 characters with at least 1 number)

* Confirm Password

* Authentication Question <-- Select -->

* Authentication Answer

Create Account Information >>

After filling out the registration form, the IT Department will review the applications daily and approve them. You will receive a return email with the activation. Students in grades 7-12 have a portal account based on their Student ID. Students can login by clicking the STUDENTS link on the website and **CSIU STUDENT PORTAL LOGIN** link. Students will login using their Student ID as UserName and the default password is **warriors** Please email techsupport@wyomingarea.org for any account login or technical issues.